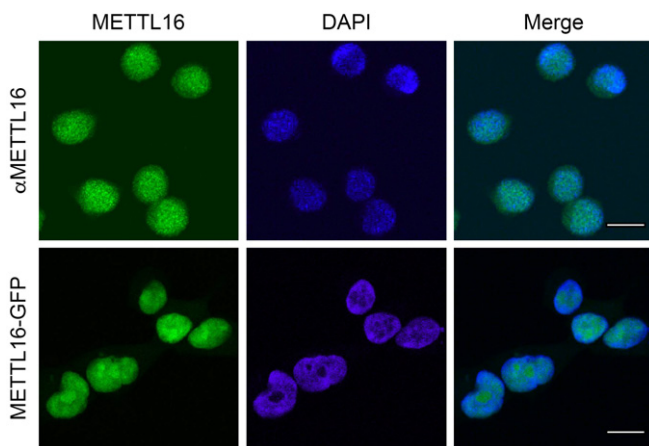
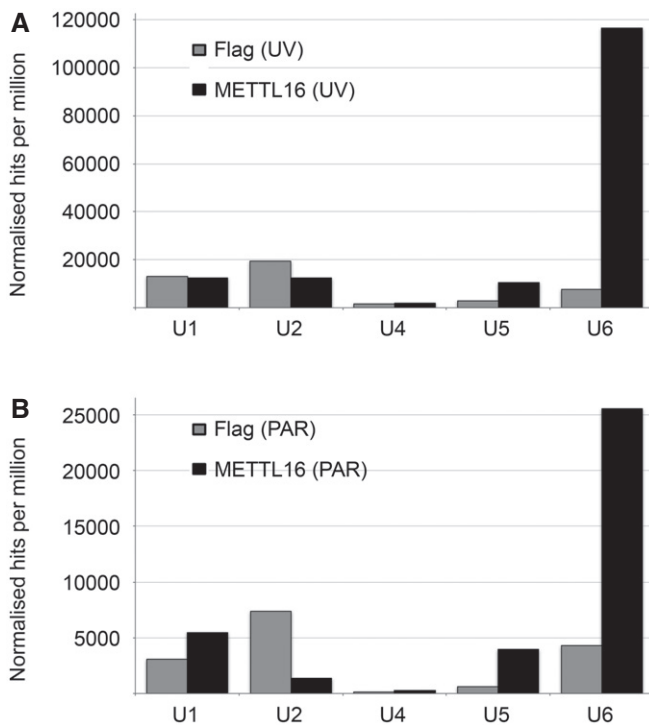


## Expanded View Figures



**Figure EV1. METTL16 localises to the nucleoplasm and nucleolus.**

Immunofluorescence was performed using an antibody against METTL16 in HEK293 cells ( $\alpha$ METTL16; green; upper panel), or alternatively, HEK293 cells expressing METTL16-GFP were fixed and directly analysed by fluorescence microscopy (METTL16-GFP; green; lower panel). Nuclear material was visualised by DAPI staining (blue) and overlays of the different channels are presented on the right (Merge). The scale bar represents 10  $\mu$ m.



**Figure EV2. METTL16 crosslinks to the U6 snRNA.**

A, B The normalised number of reads mapping to different snRNAs in the UV-CRAC (A) and PAR-CRAC (B) data sets derived from cells expressing METTL16-Flag or the Flag tag is shown.