

Expanded View Figures

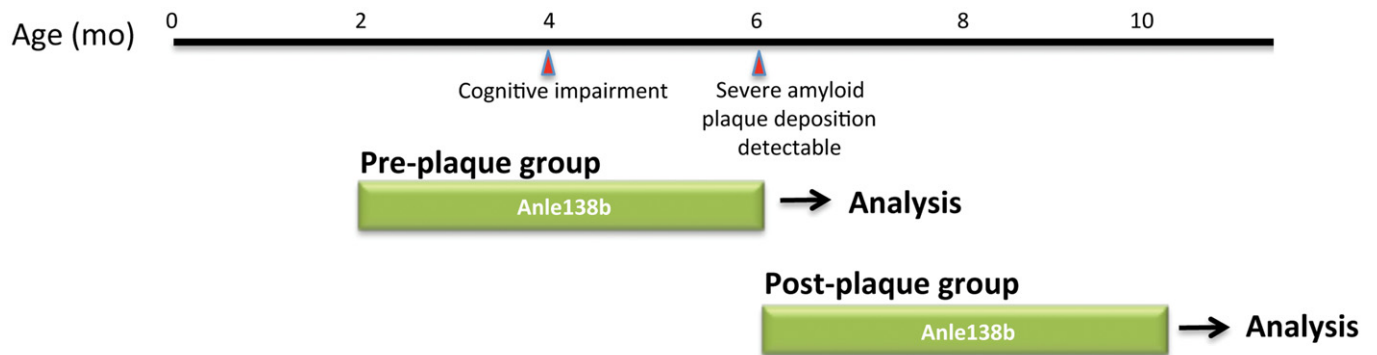


Figure EV1. Experimental design.

Overview of the experimental approach employed for the pre-plaque and the post-plaque group. Red arrows underneath the time line indicate onset of pathology in APPPS1 Δ 9 mice.

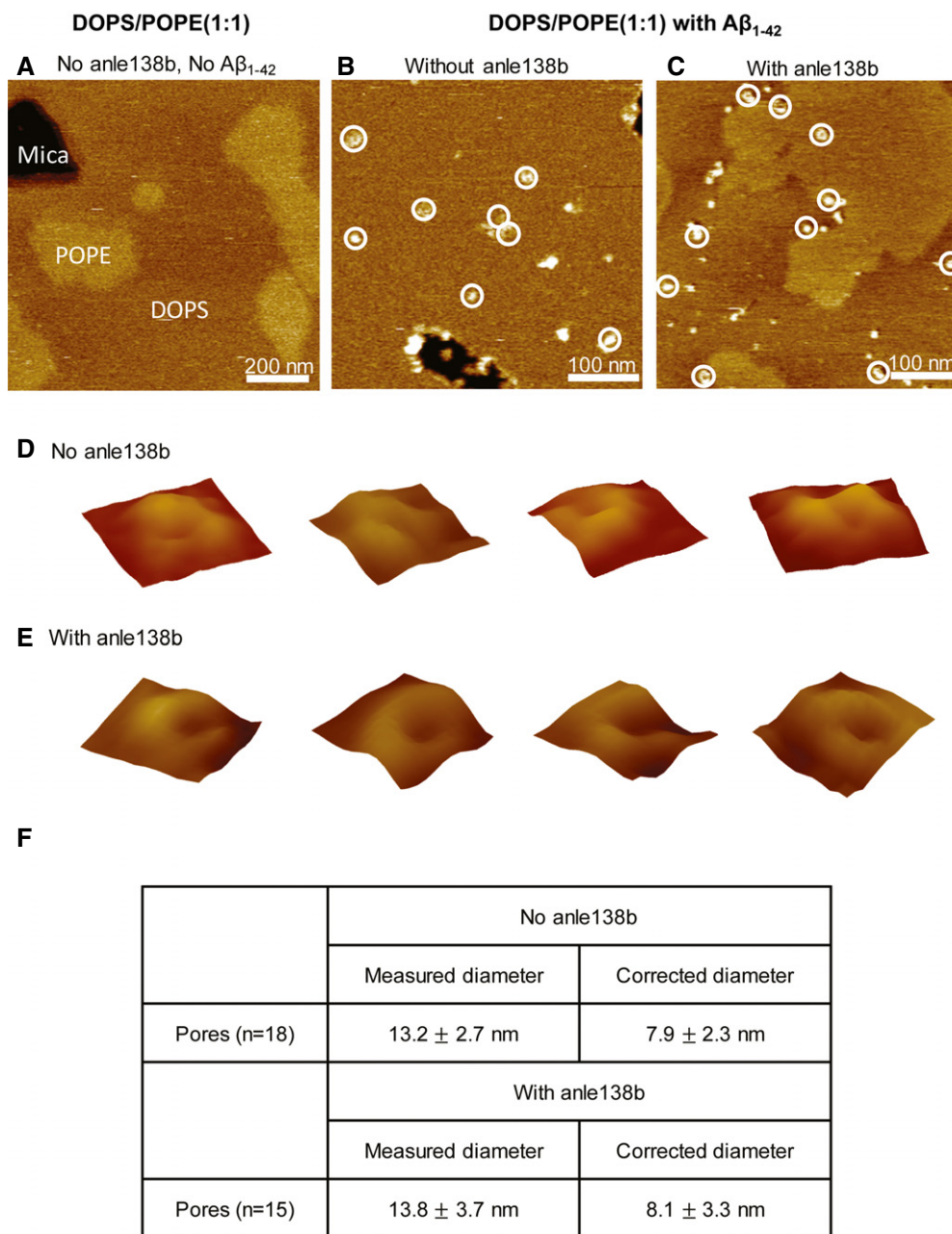


Figure EV2. Observation of A β pores by AFM in anle138b-doped membranes.

AFM tapping mode images showing similar pore structures in membranes with and without anle138b.

- A POPE/DOPS (1:1) membranes without compound and not exposed to A β ₁₋₄₂ showing lateral phase separation. Scale bar is as indicated and z scale is 5 nm.
- B Membrane with the same lipid composition as in (A) without compound reconstituted with A β ₁₋₄₂ at a 1:60 peptide/lipid molar ratio. White circles represent the position of pore-like structures. Scale bar is 100 nm and z scale is 5 nm.
- C Membrane with the same lipid composition as above with anle138b (10 mM with respect to lipid volume) and reconstituted with A β ₁₋₄₂ (1:60 peptide/lipid molar ratio). White circles represent the position of pore-like structures. Scale bar is 100 nm and z scale is 5 nm.
- D, E Four representative pores extracted from (B) and (C), respectively. Image size is 23.4 nm × 23.4 nm.
- F Table summarizing that A β pores show the same dimension in the presence or absence of anle138b. Values are represented as average ±SD.