

Differences between populations in host manipulation by the tapeworm *Schistocephalus solidus* – is there local adaptation?

Research Article

Cite this article: Hafer N. Differences between populations in host manipulation by the tapeworm *Schistocephalus solidus* – is there local adaptation? *Parasitology* <https://doi.org/10.1017/S0031182017001792>

Received: 21 June 2017
Revised: 8 September 2017
Accepted: 10 September 2017

Key words:

Host manipulation; local adaptation; *Schistocephalus solidus*; cestode; copepod; *Macrocyclops albidus*; host–parasite interactions; population differences

Author for correspondence:

Nina Hafer, E-mail: hafer@evolbio.mpg.de

Nina Hafer

Max Planck Institute for Evolutionary Biology, August-Thienemann-Str. 2, 24306 Plön, Germany

Abstract

Host manipulation whereby a parasite increases its transmission to a subsequent host by altering the behaviour of its current host is very far spread. It also occurs in host–parasite systems that are widely distributed. This offers the potential for local adaptation. The tapeworm *Schistocephalus solidus* modifies its first intermediate copepod host's predation susceptibility to suit its own needs by reducing its activity before it becomes infective and increasing it thereafter. To investigate potential differences in host manipulation between different populations and test for potential local adaptation with regard to host manipulation, I experimentally infected hosts from two distinct populations with parasites from either population in a fully crossed design. Host manipulation differed between populations mostly once the parasite had reached infectivity. These differences in infective parasites were mostly due to differences between different parasite populations. In not yet infective parasites, however, host population also had a significant effect on host manipulation. There was no evidence of local adaptation; parasites were able to manipulate foreign and local hosts equally well. Likewise, hosts were equally poor at resisting host manipulation by local and foreign parasites.

Introduction

Local adaptation is a common phenomenon whereby an organism's fitness in its local environment is higher than in a foreign environment (Kawecki and Ebert, 2004; Blanquart *et al.* 2013). One of the prime situations for such local adaptation to occur are host–parasite interactions; one of the coevolving antagonists, often the parasite, performs better with its local compared with a foreign antagonist (reviewed by Kaltz and Shykoff, 1998; Kawecki and Ebert, 2004; Greischar and Koskella, 2007; Hoeksema and Forde, 2008).

Many parasites have evolved the ability to manipulate the behaviour or other phenotypic features of their host to increase their own fitness beyond the benefits they would gain from normal exploitation. In complex life cycle parasites this host manipulation often takes the form of predation enhancement increasing the likelihood of transmission to a subsequent host (Holmes and Bethel, 1972; Poulin, 1994, 2010; Poulin and Thomas, 1999; Moore, 2002, 2013). When predation would be fatal, however, e.g. before a parasite is infective to the next host, host manipulation can take the shape of predation suppression, i.e. reduce the host's predation susceptibility (Hammerschmidt *et al.* 2009; Dianne *et al.* 2011; Weinreich *et al.* 2013; Gopko *et al.* 2015; Hafer and Milinski, 2016). Host manipulation occurs in a wide range of host–parasite systems in various environments offering the potential for local adaptation. Additionally, the underlying mechanisms might require a fine-tuned interplay between host and parasite. Acanthocephalans for example are able to alter brain serotonin levels suspected to be involved in host manipulation in a coevolved gammarid host but not in a novel gammarid host (Tain *et al.* 2007). Franceschi *et al.* (2010) tested local adaptation in the same system using different populations of the acanthocephalan and its coevolved gammarid host. In accordance with other studies on local adaptation in host parasite–interactions (reviewed by Kaltz and Shykoff, 1998; Kawecki and Ebert, 2004; Greischar and Koskella, 2007; Hoeksema and Forde, 2008), they found a tendency for higher infection success in local vs foreign parasites (Franceschi *et al.* 2010). However, Franceschi *et al.* (2010) did not observe any local adaptation with regard to host manipulation. Hosts showed some indication of evolved resistance to host manipulation, but between populations hosts were no less susceptible to host manipulation by their sympatric compared with an allopatric parasite. Viruses can be locally adapted to their host plant. This local adaptation can include changes in vector behaviour *via* altered attractiveness of the host plant (Mauck *et al.* 2014).

The cestode *Schistocephalus solidus* has a three host life cycle. As first intermediate host it infects a cyclopoid copepod. This copepod has to be eaten by a three-spined stickleback (*Gasterosteus aculeatus*) for the parasite to continue its life cycle. Reproduction takes place in a piscivorous bird where the parasite usually reproduces and dies within a week (Clarke, 1954; Dubinina, 1980). Despite its mobile final host, the population structure of *S. solidus* is well structured both globally (Nishimura *et al.* 2011) and regionally (Sprehn *et al.* 2015). In its second specific intermediate stickleback host, *S. solidus* shows clear evidence of coadaptation and local adaptation to its sympatric stickleback population (Kalbe *et al.* 2016; Scharsack

© Cambridge University Press 2017. This is an Open Access article, distributed under the terms of the Creative Commons Attribution licence (<http://creativecommons.org/licenses/by/4.0/>), which permits unrestricted re-use, distribution, and reproduction in any medium, provided the original work is properly cited.

CAMBRIDGE
UNIVERSITY PRESS

et al. 2016; Hamley *et al.* 2017; Weber *et al.* 2017). In their first intermediate copepod host, not yet infective *S. solidus* reduce their hosts' activity (Hammerschmidt *et al.* 2009; Benesh, 2010a; Hafer and Benesh, 2015; Hafer and Milinski, 2015) and predation susceptibility (Weinreich *et al.* 2013). Once the parasite becomes infective, there is a switch in host manipulation (Hammerschmidt *et al.* 2009; Hafer and Milinski, 2015) and activity (Urdal *et al.* 1995; Wedekind and Milinski, 1996; Hammerschmidt *et al.* 2009; Hafer and Milinski, 2015) and predation susceptibility (Urdal *et al.* 1995; Wedekind and Milinski, 1996) increases. This increase in activity, however, has only been observed in some studies (Urdal *et al.* 1995; Wedekind and Milinski, 1996; Hammerschmidt *et al.* 2009; Hafer and Milinski, 2015), but not in others (Benesh, 2010a; Hafer and Benesh, 2015) and might be due to different populations used in these studies. Hence, in this study I experimentally tested for population differences and potential local adaptation of host manipulation using two different populations in a fully crossed design.

Material and methods

Hosts

Copepods (*Macrocyclus albidus*) from both populations stem from stock that has been maintained in the laboratory for several years (van der Veen and Kurtz, 2002). One originated from Neustädter Binnenwasser, Germany, the other from Lake Skogseidvatnet, Norway. For better readability, I will refer to them as German and Norwegian hosts respectively, throughout the paper, even so they may be different from other host populations in these countries. On the day prior to infection, adult male copepods were distributed to 24-well microtitre plates with about 1 mL of water. Copepods from both populations were placed on each plate to avoid confounding copepod population with potential plate effects. Copepods were maintained at 18 °C in a 16/8 h light/dark cycle and their wells were cleaned if necessary and they were fed with five *Artemia* sp. naupili every other day. Feeding occurred always on the day when no behavioural recordings (see below) took place. At the same time I checked for dead copepods, but since mortality was very low (less than 5%), I was unable to use it for any analysis.

Parasites

Schistocephalus solidus originated from the same populations as the copepods, i.e. German and Norwegian parasites. Parasites were originally obtained by dissecting wild-caught three-spined sticklebacks and breeding the adult parasites in pairs in an *in vitro* system (Smyth, 1946; Wedekind, 1997). For parasites from Germany, I used a F1 generation bred from parasites maintained in the laboratory for one generation due to difficulties in obtaining fresh parasites for breeding. I used 6 different families for German parasites (14–27 copepods per family and treatment resulting in 3–9 infected copepods per family and treatment) and 5 different families for Norwegian parasites (18–32 copepods per family and treatment resulting in 3–10 infected copepods per family and treatment), since in one Norwegian parasite family all but one coracidia failed to hatch. This resulted in 576 copepods over all treatments (NO_c: 33, NO_no: 113, NO_ger: 122, GER_c: 39, GER_no: 121, GER_ger: 148; NO/no: Norway, GER/ger: Germany, c: Unexposed controls; Capital letter represent host population, small letters represent parasite population), 190 of which were infected and available for the behavioural analysis (NO_c: 28; NO_no: 32; NO_ger: 35; GER_c: 35; GER_no: 28; GER_ger: 32). Parasite eggs were stored in the

fridge (4 °C) until use, incubated for approximately 3 weeks at 20 °C, and then exposed to light over night to induce hatching (Dubinina, 1980). Infection took place by exposing copepods to one coracidium each. Copepods that were used as uninfected controls received no coracidia but were otherwise treated the same. Infection treatments were equally spread over all plates and distributed randomly within each plate. On day 8 post infection, I checked the infection status for a subset of copepods and recorded presence or absence of a cercomer as proxy for development (Benesh, 2010a, b; Benesh and Hafer, 2012). The remaining copepods were only checked for infection on day 16 post infection (i.e. after all behavioural trials had been conducted).

Behavioural recordings

Copepod behaviour was recorded by placing a plate with copepods on an apparatus that dropped it by about 3 mm (Hammerschmidt *et al.* 2009; Benesh, 2010a; Hafer and Benesh, 2015; Hafer and Milinski, 2015, 2016). This simulates a failed predator attack after which the copepod should behave as if an enhanced predation risk exists and avoid movement. One minute after placing the plate on this apparatus, I initiated the drop and recorded copepod behaviour for 15 min using a HD-camera (MHD-13MG6SH-D, Mintron, Taiwan).

From these video recordings I extracted one image every two second for 90 seconds in ImageJ (Schneider *et al.* 2012) at two different time points, starting 10 s after the simulated predator attack to exclude the initial reaction and 90 seconds at the very end of the recording to allow the copepods to recover. Using a custom-made python (Python Software Foundation. Python Language Reference, version 2.7. Available at <http://www.python.org>) program, each well was automatically extracted from these images and the copepod position recorded. To find a copepod's position, a mean image was calculated from all images available for a copepod on any given day and subtracted from each individual image. Since the copepod was the only moving object within each well, this resulted in the copepod's location being the position with the highest difference between each image and the mean image. To exclude random noise leading to small differences between pixels that could have resulted in the copepod being recorded as moving by very few pixels when it remained stationary, a copepod was only considered moving if it moved by at least 5 pixel (about one copepod length).

Statistical analysis

All statistics were conducted in R (R Development Core Team and R Core Team, 2016).

To analyse infection success, only exposed copepods that had survived long enough to check them for infection (8 or 16 days post infection) were used. For development (i.e. presence or absence of a cercomer) all infected copepods for which data on cercomer presence was available (i.e. that were checked 8 days post infection) were used. Infection success and development were then analysed separately using generalized linear mixed models with binomial error structure and parasite family as random effect. Host and parasite population and their interaction were stepwise included into the model. Subsequently, I compared the models using AIC and used likelihood ratio tests to obtain *P* values for this comparison. A more complicated model was accepted if it was significantly better at explaining the data than a less complicated model. Additionally, I used a generalized linear model to investigate development using the same fixed factors and binomial error family, but excluding the random factor of parasite family.

To analyse host activity (i.e. proportion of time spent moving), copepods that died before the end of the experiment or in which exposure had not resulted in an infection were excluded from the dataset. For statistical analysis, I used generalized linear mixed models in the lme4 package (Bates *et al.* 2015). I included parasite age and time point (after a simulated predator attack *vs* after a recovery period) as fixed effects and copepod identity and parasite family as random effects to account for variation between individual copepods and parasite families, respectively. I then stepwise added parasite population and host population and their interaction with parasite age and day and with each other. I compared the models using AIC and used likelihood ratio tests to obtain *P* values for this comparison. A model was accepted as having a better fit than a less complicated one if it explained the data significantly better. Additionally, I compared a model containing parasite population to one containing infection to check whether any explanatory power of parasite population might be due to infection rather than actual parasite population. As both host population and copepod population and their interaction with parasite age and time point significantly influenced host activity, I conducted *post hoc* tests using Tukey tests with general linear hypotheses within the multcomp package to obtain *P* values for each comparison that were adjusted for multiple testing (Hothorn *et al.* 2008). I defined contrasts for the *post hoc* tests to contain all pairs in which either host or parasite population were the same and the comparison between the two sympatric pairs. Again, parasite family was included as random effect. I used separate *post hoc* tests for each parasite age and time point to investigate differences between different host–parasite combinations.

To test whether I had enough power to detect local adaptation, I conducted a power analysis for generalised linear models using the pwr-package (Champely, 2017) in R (R Development Core Team and R Core Team, 2016). This allowed me to estimate the power of my analysis, i.e. the probability of finding an existing effect at $P < 0.05$ with my sample size (i.e. number of copepods) given a specific effect size (either small, medium or large, i.e. 0.1, 0.3 and 0.5 respectively, following Cohen (1988)). I did this for each of my response variables, i.e. infection success, development and host activity.

Results

Do infection rates differ?

Infection success did not significantly depend on host or parasite population or their interaction ($P > 0.08$, Table 1, Fig. 1a). A subsequent power analysis revealed that sample size was sufficient to pick up even small effect sizes (power = 88%).

Does development differ?

Development did not depend on host or parasite population or their interaction ($P > 0.1$, Table 1). Due to the small sample

size, power to pick up a small effect was however only 18% (80% for medium effects). Interestingly, if the random effect of parasite family was excluded from the model, German parasites developed significantly faster than Norwegian parasites ($\chi^2_{53,1} = 4.19$, $P = 0.041$) irrespectively of their host population ($P > 0.3$, Fig. 1b).

Host manipulation

Host activity was significantly affected by parasite population and its interaction with time point and parasite age ($P < 0.001$, Table 2). Including parasite population into the model explained the data significantly better than using only whether hosts were infected or not (AIC: -599 *vs* -703 , $\chi^2_{28,8} = 122$, $P < 0.001$). Copepod population only had a marginally significant effect on host activity ($P = 0.056$, Table 2), but interacted significantly with time point and parasite age ($P < 0.001$, Table 2). Uninfected copepods from different populations did not behave significantly different from each other ($P > 0.07$, Table 3, Fig. 2, grey lines), except on day 12 when uninfected copepods from Norway were more active than uninfected copepods from Germany after the simulated predator attack ($P = 0.048$, Table 3, Fig. 2, grey lines). This indicates that differences in activity between host populations were indeed related to host manipulation.

Notably, however, there was no significant interaction between host and parasite population ($P = 0.21$, Table 2), which would indicate local adaptation (Kawecki and Ebert, 2004; Blanquart *et al.* 2013). While power to detect such an effect if it was small was only 48%, I did have enough power (>99%) to detect any medium or large effect.

Differences between populations in host manipulation

Within sympatric pairs, German host–parasite pairs were more active than Norwegian ones resulting in differences between populations once host manipulation had set in (from 6 days post infection onwards, Table 3, Fig. 2, light green *vs* dark blue line). Once the parasite reached infectivity (from 12 days post infection onwards), differences became more pronounced both after the simulated predator attack and after a recovery period ($P < 0.005$, Table 3, Fig. 2b). On day 16, differences after a recovery period became non-significant ($P = 0.48$, Table 3), but remained significant after the simulated predator attack ($P = 0.001$, Table 3).

Are these differences driven by host or parasite population?

Within the same host population, significant differences between parasite populations only appeared after the parasites had reached infectivity (from 12 to 14 days post infection onwards, $P < 0.04$, Table 3, Fig. 2, light green *vs* light blue line and dark green *vs* dark blue line) – German parasites induced higher activity than Norwegian parasites.

Differences between host populations infected by the same parasite population were much less pronounced and occurred exclusively

Table 1. Analysis of variance on the outcome of the generalized linear models to test for population differences between infection success and development.

	Infection success				Development			
	AIC	DF	χ^2	<i>P</i>	AIC	DF	χ^2	<i>P</i>
+Host population	567	1.3	2.89	0.089	65	1.3	0.38	0.54
+Parasite population	569	1.4	0.29	0.59	65	1.4	2.01	0.16
+Host population: parasite population	571	1.5	0.009	0.93	66	1.5	0.89	0.35
<i>N</i>	488 copepods infected with 11 parasite families				56 copepods infected with 11 parasite families			

Whether or not a copepod was infected (infection success, AIC: 568)/possessed a cercomer 8 days post infection (development, AIC: 63) was used as response variable. Parasite family was used as random effect, host and parasite population were used as predictor variables.

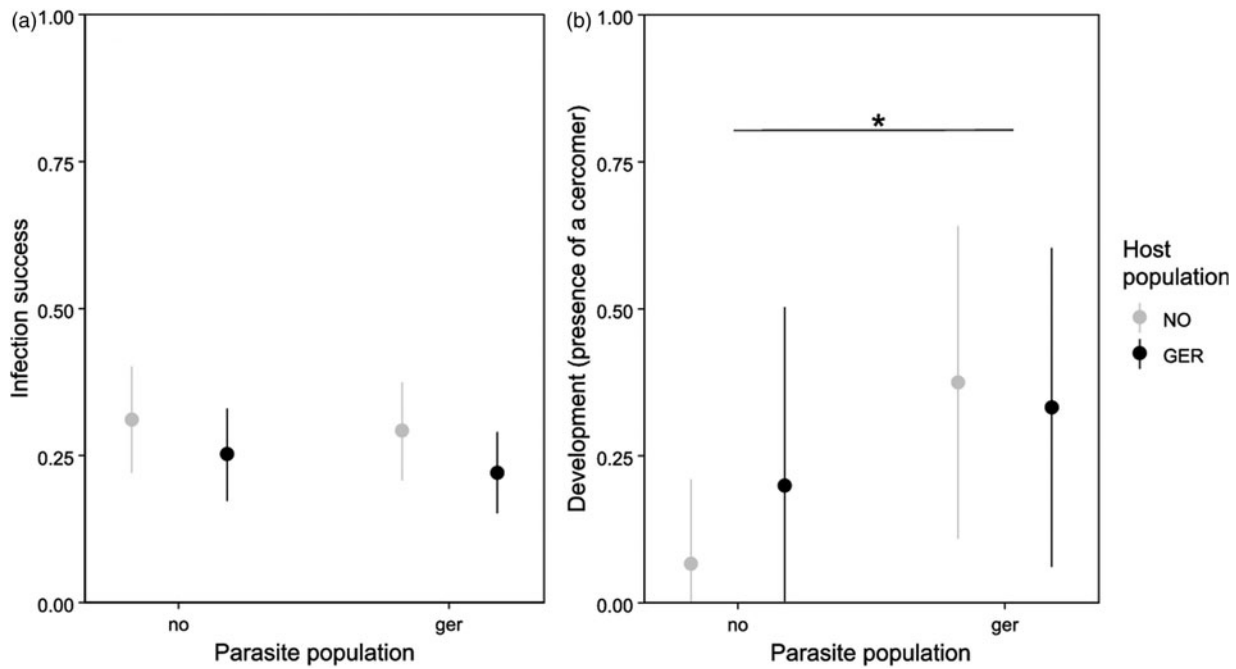


Fig. 1. Influence of host and parasite population on infection success (a) and development (b). Development represents the presence or absence of a cercomer 8 days post infection. Error bars represent 95% CI. Asterisk indicates significant differences. NO/no: Norway, GER/ger: Germany. Capital letters represent host population, small letters represent parasite population. N: infection success: NO_no: 106, NO_ger: 120, GER_no: 118, GER_ger: 144; development: NO_no: 15, NO_ger: 16, GER_no: 10, GER_ger: 15.

before the parasite reached infectivity and only after a recovery period ($P < 0.04$, 6 days post infection (only Norwegian parasites) and 8 days post infection). During this time activity was reduced more strongly in Norwegian than in German copepods.

Discussion

Host manipulation, but not infection susceptibility, differs between different host and parasite populations of *S. solidus*. However, parasites do not perform better in their sympatric host or hosts better when infected by their sympatric parasite. So there is no evidence for local adaptation between hosts and parasites in this system. Rather, both parasite and host seem to engage in their usual host manipulation and reaction to that host manipulation irrespectively of whether they infect or are infected by a sympatric or an allopatric host or parasite, respectively. The effect of host and parasite population differs between

infective and not yet infective parasites. Differences in not yet infective parasites are relatively small and driven by host population, while the much larger differences once parasites reach infectivity seem to be driven by parasite population.

Parasite populations also seem to differ in how fast they develop with German parasites developing faster than Norwegian ones irrespective of host population. However, this effect was not visible when controlling for parasite family. This could have been due to reduced power when accounting for parasite family in the statistical model and high variation between families since very few parasite individuals were available for each family–treatment combination and development could either be slow or fast (i.e. absence or presence of a cercomer). Development in copepods can have some carryover effects for development in sticklebacks; parasites that develop faster in the copepods also grow to larger sizes in sticklebacks (Benesh and Hafer, 2012), which correlates directly with the number of eggs produced in the final bird host (Wedekind

Table 2. Outcome of likelihood ratio tests on generalized linear models for copepod activity.

Factors	AIC	DF	χ^2	<i>P</i>
+Parasite population	−552	14.2	16.0	0.0003
+Parasite age: parasite population	−684	28.14	160.1	<0.0001
+Time: parasite population	−703	31.2	23.1	<0.0001
+Host population	−705	32.1	3.7	0.056
+Host population: parasite age	−743	38.7	52.2	<0.0001
+Host population: time	−753	39.1	12.5	0.0004
+Host population: parasite population	−753	41.2	3.1	0.21
3040 observations on 190 copepods infected with 11 different parasite families				

The initial model included the proportion of time a copepod spent moving (activity) as response, time (i.e. after a simulated predator attack vs after a recovery period) and parasite age as fixed effects and copepod identity and parasite family as random effects (AIC: −540). Subsequently, I added parasite population, its interaction with time and parasite age, host population, its interaction with time and parasite age and the interaction between host and parasite population. Test statistics and MCMC-estimated *P* values are for the comparison with the preceding model.

Significant *P* values are highlighted in bold.

Table 3. Outcome of multiple comparisons for host activity between populations for each parasite age and time.

Parasite age (days)	2		4		6		8		10		12		14		16	
	Z	P	Z	P	Z	P	Z	P	Z	P	Z	P	Z	P	Z	P
After a simulated predator attack																
GER_c – NO_c	-0.71	0.97	0.20	1	0.43	0.1	-0.65	0.98	-2.52	<i>0.076</i>	-2.70	0.048	-0.20	1	-1.06	0.85
NO_no – NO_c	-1.99	0.25	-1.61	0.48	-3.90	0.001	-3.99	0.001	-5.67	<0.001	-5.57	<0.001	-2.87	0.029	-2.06	0.23
GER_ger – GER_c	-0.99	0.87	-0.29	1	-1.65	0.44	-1.87	0.33	-0.62	0.98	-0.07	1	0.64	0.98	1.66	0.46
GER_ger – NO_no	0.37	1	1.59	0.49	2.85	0.030	2.18	0.18	2.71	0.045	3.43	0.004	3.95	0.001	3.91	0.001
NO_ger – NO_no	1.06	0.84	0.31	1	0.86	0.92	1.61	0.49	1.99	0.25	2.54	<i>0.074</i>	5.20	<0.001	4.75	<0.001
GER_ger – GER_no	-0.40	1	0.32	1	0.66	0.97	1.20	0.77	1.20	0.76	2.20	0.17	2.93	0.025	4.66	<0.001
GER_no – NO_no	0.76	0.95	1.21	0.75	2.10	0.20	1.04	0.86	1.42	0.61	1.16	0.79	0.99	0.88	-1.00	0.88
GER_ger – NO_ger	-0.68	0.97	1.32	0.68	2.05	0.22	0.69	0.97	0.78	0.95	1.00	0.87	-1.29	0.71	-0.96	0.90
After a recovery period																
GER_c – NO_c	0.72	0.96	1.61	0.50	1.93	0.29	1.24	0.73	-0.35	1	0.58	0.99	0.12	1	-0.40	1
NO_no – NO_c	-0.63	0.98	-1.11	0.84	-3.36	0.006	-5.71	<0.001	-4.24	<0.001	-3.36	0.006	-4.41	<0.001	-2.77	0.039
GER_ger – GER_c	-0.48	0.99	-1.33	0.69	-2.47	<i>0.088</i>	-3.59	0.002	-2.01	0.25	-0.88	0.92	-0.75	0.96	-1.20	0.77
GER_ger – NO_no	0.91	0.90	1.10	0.83	2.90	0.027	3.68	0.002	2.62	<i>0.060</i>	3.74	0.002	4.40	<0.001	1.66	0.46
NO_ger – NO_no	0.45	1	-0.44	1	0.77	0.96	1.01	0.86	2.11	0.21	3.90	0.001	4.63	<0.001	2.83	0.033
GER_ger – GER_no	0.95	0.89	-0.57	0.99	-0.43	1	0.72	0.96	1.03	0.86	1.62	0.49	3.34	0.006	3.56	0.003
GER_no – NO_no	-0.07	1	1.95	0.28	3.74	0.001	2.87	0.029	1.75	0.40	2.37	0.11	0.99	0.88	-2.18	0.18
GER_ger – NO_ger	0.49	0.99	1.88	0.32	2.54	<i>0.073</i>	2.78	0.037	0.64	0.98	-0.13	1	-0.16	1	-1.30	0.71

Significant *P* values ($P < 0.05$) are highlighted in bold, marginally significant ones ($P < 0.1$ in italics). NO/no: Norway, GER/ger: Germany. Capital letter represent host population, small letters represent parasite population.

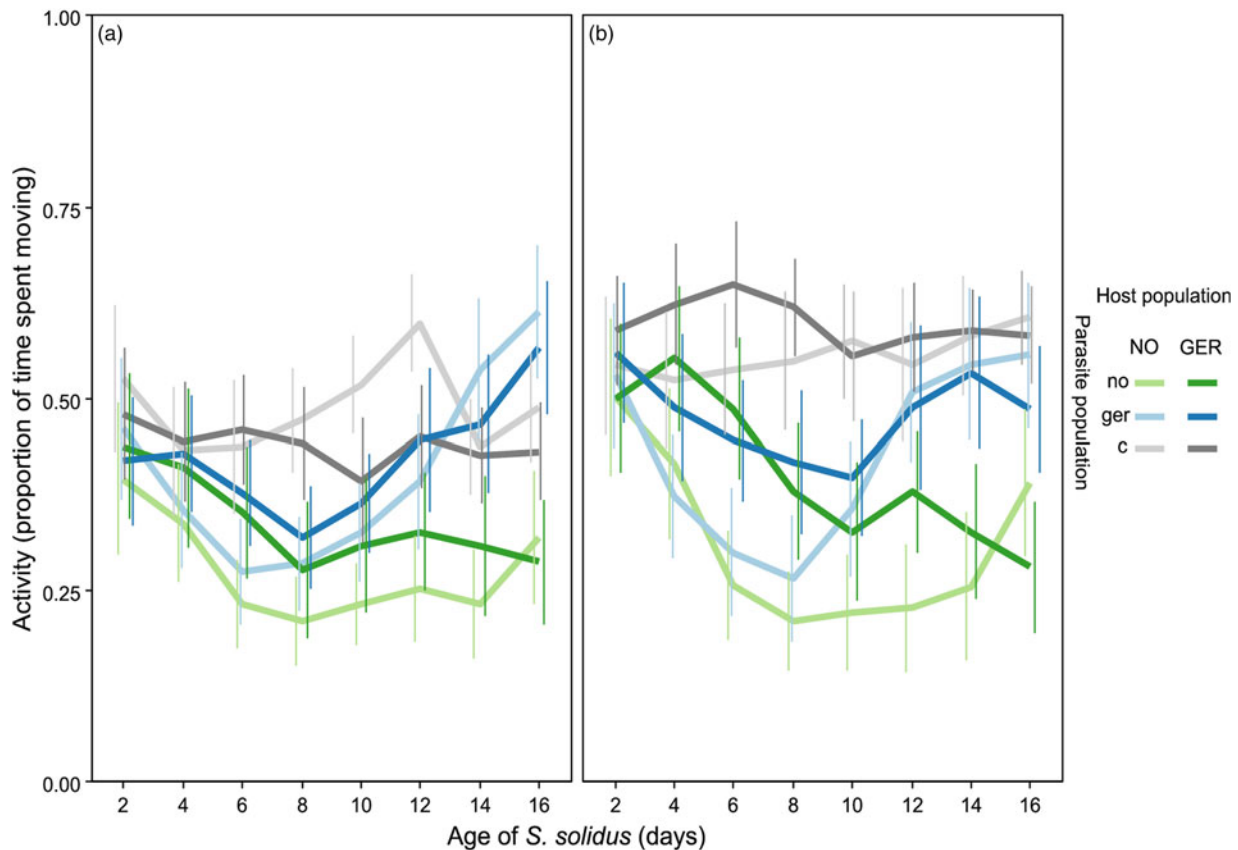


Fig. 2. Host activity after a simulated predator attack (a) and after a recovery period (b). Error bars represent 95% CI. NO/no: Norway, GER/ger: Germany, c: Unexposed controls. Capital letters represent host population, small letters represent parasite population. N: NO_c: 28; NO_no: 32; NO_ger: 35; GER_c: 35; GER_no: 28; GER_ger: 32.

et al. 1998). Nevertheless, since I did not observe any interaction between host and parasite populations, there is no indication for different carryover effects between parasites from sympatric and allopatric first intermediate hosts.

Host manipulation prior to the parasite reaching infectivity, i.e. predation suppression, seems to be influenced by copepod population. This could indicate that German hosts are more resistant to this initial host manipulation than Norwegian hosts. The parasites may benefit from these differences through increased survival leading to a higher likelihood to reach the next host. From the parasite's perspective this initial predation suppression should evolve more easily than predation enhancement, since it need not specifically target a certain subsequent host, but any reduction in predation will benefit the parasite (Parker *et al.* 2009). This could make the evolution of predation suppression less sensitive to different selection pressures, e.g. if predation differs between populations.

Parasite population determines the extent of the increase in activity once the parasite reaches infectivity (predation enhancement). It occurs in German parasite but not in Norwegian parasites. Interestingly, a similar increase in activity as in German parasites also occurs in other species of complex life cycle parasites that use copepods as first intermediate host and fish as subsequent host (Poulin *et al.* 1992; Hafer and Milinski, 2016). Could the absence of this increase in host activity be a side effect of faster development? Or, put differently, could Norwegian parasites simply never have become infective throughout the experiment? In a previous study, using the same Norwegian population, some parasites were able to infect sticklebacks already 11 days post infection (Benesh and Hafer, 2012). After 2 weeks, about 50% of Norwegian parasites are infective to sticklebacks (Benesh *et al.* 2012) and by 3 weeks post infection, nearly all can successfully infect sticklebacks

(Benesh and Hafer, 2012). Even in Norwegian parasites of that age, Benesh (2010a) observed no increase in host activity. The timing of when parasites reach infectivity seems similar to German parasites (Hammerschmidt *et al.* 2009). So it seems unlikely that the observed differences in host manipulation by infective parasites are due to delayed development. Additionally, in agreement with a previous study in the same system (Hafer and Benesh, 2015), I found no effect of development (i.e. cercariae absence or presence) on host activity (see Supplementary information). So why did the parasites from the Norwegian population not induce any increase in activity? Predation enhancement through increased host activity serves to enhance transmission to the subsequent host. Indeed, it has been shown that predation is enhanced in copepods harbouring infective *S. solidus* (Urdal *et al.* 1995; Wedekind and Milinski, 1996) and that predation susceptibility correlates positively with host activity (Wedekind and Milinski, 1996). Urdal *et al.* (1995) and Wedekind and Milinski (1996) both used populations in which activity was clearly enhanced by the presence of infective parasites. Accordingly, parasites in less active (i.e. less manipulated hosts) should not benefit from enhanced predation (and hence transmission). Predation enhancement comes at the cost of enhanced fatal predation by dead-end predators (Mouritsen and Poulin, 2003; Seppälä *et al.* 2008). I am not aware of any data as to whether the risk of dead-end predation differs between the populations used in the current study, but if so, a strong risk of dead-end predation should select against predation enhancement or select for selective predation enhancement to only correct predators (Parker *et al.* 2009).

In its second intermediate host, the three-spined stickleback, *S. solidus* shows some evidence of local adaptation. Using the very same host and parasite populations used in this study, Kalbe

et al. (2016) observed that Norwegian *S. solidus* were better in infecting the Norwegian stickleback population compared with parasites from the German population. Additionally, Norwegian parasites grew to a much larger size than German parasites in either host population, but within their own host population, both grew to a similar (potentially optimal) size (Kalbe *et al.* 2016). Recently, Hamley *et al.* (2017) also observed such a pattern consistent with the idea of an optimal size in other populations of *S. solidus* and sticklebacks; Parasites grew to a similar size in their sympatric host population but not in an allopatric host population (Hamley *et al.* 2017). The parasite could be locally adapted to exploit its host and cope with its immune system at an optimal level resulting in maladaptive under- or overexploitation when infecting hosts from the wrong population (Kalbe *et al.* 2016; Hamley *et al.* 2017). Similarly, *S. solidus* should be locally adapted to its first intermediate copepod host. In both cases, the parasite shows higher rates of gene flow due to the mobility of its final bird host. Such higher gene flow is predicted to render an evolutionary advantage in an arms race by providing access to novel genes (Greischar and Koskella, 2007; Hoeksema and Forde, 2008; Gandon and Nuismer, 2009; Blanquart *et al.* 2013). This seems to be more important in deciding who wins an arms race than generation times (Kaltz and Shykoff, 1998; Greischar and Koskella, 2007; Hoeksema and Forde, 2008), which are much shorter in copepods, but similar in *S. solidus* and sticklebacks. Unlike the specific second intermediate stickleback host, *Macrocyclus albidus* is just one of many potential first intermediate hosts of *S. solidus*. This could make local adaptation of the parasite to one particular host population more difficult due to the large host diversity (Lajeunesse and Forbes, 2002). In turn, local adaptation of copepods to *S. solidus* might be hindered by probably very low parasite prevalence (Zander *et al.* 1994; Pasternak *et al.* 1995; Hanzelová and Gerdeaux, 2003), reducing selection pressures. I cannot rule out that some evidence of local adaptation was missed, since I used only two different populations and some pattern of local adaptation could have emerged if I had added further populations. Notably, however, Franceschi *et al.* (2010) also found no evidence for host manipulation to be locally adapted in gammarids and their acanthocephalan parasites despite using more populations and observing a prevalence that should be high enough to impose selection on the host. Despite no evidence for local adaptation between hosts and parasites, there could be some local adaptation to other environmental factors such as predation underlying the differences in host manipulation observed. Understanding such factors could help shed light on the selection pressures resulting in the evolution and maintenance of host manipulation.

Supplementary material. The supplementary material for this article can be found at <https://doi.org/10.1017/S0031182017001792>

Acknowledgements. I would like to thank M. Schwarz for technical assistance, F. Hahmann for help with data analysis, and M. Milinski and two anonymous reviewers for helpful comments on an earlier version of this manuscript.

Financial support. This work was supported by the Max-Planck-Society.

References

- Bates DM, Maechler M, Bolker B and Walker S (2015) Fitting linear mixed-effects models using lme4. *Journal of Statistical Software* **67**, 1–48.
- Benesh DP (2010a) What are the evolutionary constraints on larval growth in a tropically transmitted parasite? *Oecologia* **162**, 599–608.
- Benesh DP (2010b) Developmental inflexibility of larval tapeworms in response to resource variation. *International Journal for Parasitology* **40**, 487–497.
- Benesh DP and Hafer N (2012) Growth and ontogeny of the tapeworm *Schistocephalus solidus* in its copepod first host affects performance in its stickleback second intermediate host. *Parasites & Vectors* **5**, 90.
- Benesh DP, Weinreich F and Kalbe M (2012) The relationship between larval size and fitness in the tapeworm *Schistocephalus solidus*: bigger is better? *Oikos* **121**, 1391–1399.
- Blanquart F, Kaltz O, Nuismer SL and Gandon S (2013) A practical guide to measuring local adaptation. *Ecology Letters* **16**, 1195–1205.
- Champely S (2017) pwr: Basic Functions for Power Analysis. version 1.2–1. Available at: <https://cran.r-project.org/package=pwr>
- Clarke AS (1954) Studies on the life cycle of the pseudophyllidean cestode *Schistocephalus solidus*. *Proceedings of the Zoological Society* **124**, 257–302.
- Cohen H (1988) *Statistical Power Analysis for the Behavioral Sciences*. Lawrence Erlbaum, Hillsdale, NJ.
- Dianne L, Perrot-Minnot MJ, Bauer A, Gaillard M, Léger E and Rigaud T (2011) Protection first then facilitation: a manipulative parasite modulates the vulnerability to predation of its intermediate host according to its own developmental stage. *Evolution* **65**, 2692–2698.
- Dubinin MN (1980) *Tapeworms (Cestoda, Ligulidae) of the Fauna of the USSR*. Amerind Publishing Co. Pvt. Ltd., New Dehli.
- Franceschi N, Cornet S, Bollache LL, Dechaume-Moncharmont F-X, Bauer A, Motreuil S and Rigaud T (2010) Variation between populations and local adaptation in acanthocephalan-induced parasite manipulation. *Evolution* **64**, 2417–2430.
- Gandon S and Nuismer SL (2009) Interactions between genetic drift, gene flow, and selection mosaics drive parasite local adaptation. *American Naturalist* **173**, 212–224.
- Gopko M, Mikheev VN and Taskinen J (2015) Changes in host behaviour caused by immature larvae of the eye fluke: evidence supporting the predation suppression hypothesis. *Behavioral Ecology and Sociobiology* **69**, 1723–1730.
- Greischar MA and Koskella B (2007) A synthesis of experimental work on parasite local adaptation. *Ecology Letters* **10**, 418–434.
- Hafer N and Benesh DP (2015) Does resource availability affect host manipulation? – An experimental test with *Schistocephalus solidus*. *Parasitology Open* **1**, e3.
- Hafer N and Milinski M (2015) When parasites disagree: evidence for parasite-induced sabotage of host manipulation. *Evolution* **69**, 611–620.
- Hafer N and Milinski M (2016) Inter- and intraspecific conflicts between parasites over host manipulation. *Proceeding of the Royal Society B* **283**, 20152870.
- Hamley M, Franke F, Kurtz J and Scharsack JP (2017) An experimental approach to the immuno-modulatory basis of host-parasite local adaptation in tapeworm-infected sticklebacks. *Experimental Parasitology* **180**, 119–132.
- Hammerschmidt K, Koch K, Milinski M, Chubb JC and Parker GA (2009) When to go: optimization of host switching in parasites with complex life cycles. *Evolution* **63**, 1976–1986.
- Hanzelová V and Gerdeaux D (2003) Seasonal occurrence of the tapeworm *Proteocephalus longicollis* and its transmission from copepod intermediate host to fish. *Parasitology Research* **91**, 130–136.
- Hoeksema JD and Forde SE (2008) A meta-analysis of factors affecting local adaptation. *American Naturalist* **171**, 275–290.
- Holmes JC and Bethel WM (1972) Modification of intermediate host behaviour by parasites. *Zoological Journal of the Linnean Society* **51**, 123–149.
- Hothorn T, Bretz F and Westfall P (2008) Simultaneous inference in general parametric models. *Biometrical Journal* **50**, 346–363.
- Kalbe M, Eizaguirre C, Scharsack JP and Jakobsen PJ (2016) Reciprocal cross infection of sticklebacks with the diphylobothriidean cestode *Schistocephalus solidus* reveals consistent population differences in parasite growth and host resistance. *Parasites & Vectors* **9**, 130.
- Kaltz O and Shykoff JA (1998) Local adaptation in host–parasite systems. *Heredity* **81**, 361–370.
- Kawecki TJ and Ebert D (2004) Conceptual issues in local adaptation. *Ecology Letters* **7**, 1225–1241.
- Lajeunesse MJ and Forbes MR (2002) Host range and local parasite adaptation. *Proceedings. Biological Sciences/The Royal Society* **269**, 703–710.
- Mauck KE, De Moraes CM and Mescher MC (2014) Evidence of local adaptation in plant virus effects on host-vector interactions. *Integrative and Comparative Biology* **54**, 193–209.
- Moore J (2002) *Parasites and the Behavior of Animals*. New York: Oxford University Press.
- Moore J (2013) An overview of parasite-induced behavioral alterations – and some lessons from bats. *The Journal of Experimental Biology* **216**, 11–17.

- Mouritsen KN and Poulin R** (2003) Parasite-induced trophic facilitation exploited by a non-host predator: a manipulator's nightmare. *International Journal for Parasitology* **33**, 1043–1050.
- Nishimura N, Heins DC, Andersen RO, Barber I and Cresko WA** (2011) Distinct lineages of *schistocephalus* parasites in threespine and ninespine stickleback hosts revealed by DNA sequence analysis. *PLoS ONE* **6**, e22505.
- Parker GA, Ball MA, Chubb JC, Hammerschmidt K and Milinski M** (2009) When should a trophically transmitted parasite manipulate its host? *Evolution* **63**, 448–458.
- Pasternak AF, Huntingford FA and Crompton DWT** (1995) Changes in metabolism and behaviour of the freshwater copepod *Cyclops strenuus abyssorum* infected with *Diphyllobothrium* spp. *Parasitology* **110**, 395–399.
- Poulin R** (1994) Meta-analysis of parasite-induced behavioural changes. *Animal Behaviour* **48**, 137–146.
- Poulin R** (2010) Parasite manipulation of host behavior: an update and frequently asked questions. *Advances in the Study of Behavior* **41**, 151–186.
- Poulin R and Thomas F** (1999) Phenotypic variability induced by parasites: extent and evolutionary implications. *Parasitology Today* **15**, 28–32.
- Poulin R, Curtis MA and Rau ME** (1992) Effects of *Eubothrium salvelini* (Cestoda) on the behaviour of *Cyclops vernalis* (Copepoda) and its susceptibility to fish predators. *Parasitology* **105**, 265–271.
- R Development Core Team and R Core Team** (2016) *R: A Language and Environment for Statistical Computing*. R Foundation for Statistical Computing, Vienna, Austria.
- Scharsack JP, Franke F, Erin NI, Kuske A, Büscher J, Stolz H, Samonte IE, Kurtz J and Kalbe M** (2016) Effects of environmental variation on host-parasite interaction in three-spined sticklebacks (*Gasterosteus aculeatus*). *Zoology* **119**, 375–383.
- Schneider CA, Rasband WS and Eliceiri KW** (2012) NIH image to ImageJ: 25 years of image analysis. *Nature Methods* **9**, 671–675.
- Seppälä O, Valtonen ET and Benesh DP** (2008) Host manipulation by parasites in the world of dead-end predators: adaptation to enhance transmission? *Proceeding of the Royal Society B* **275**, 1611–1615.
- Smyth JD** (1946) Studies on tapeworm physiology I. The cultivation of *Schistocephalus solidus* in vitro. *The Journal of Experimental Biology* **23**, 47–70.
- Sprehn CG, Blum MJ, Quinn TP and Heins DC** (2015) Landscape genetics of *Schistocephalus solidus* parasites in threespine stickleback (*Gasterosteus aculeatus*) from Alaska. *PLoS ONE* **10**, 1–17.
- Tain L, Perrot-Minnot M-J, Cézilly F and Cézilly F** (2007) Differential influence of *Pomphorhynchus laevis* (Acanthocephala) on brain serotonergic activity in two congeneric host species. *Biology Letters* **3**, 68–71.
- Urdal K, Tierney JF and Jakobsen PJ** (1995) The tapeworm *Schistocephalus solidus* alters the activity and response, but not the predation susceptibility of infected copepods. *The Journal of Parasitology* **81**, 330–333.
- van der Veen IT and Kurtz J** (2002) To avoid or eliminate: cestode infections in copepods. *Parasitology* **124**, 465–474.
- Weber JN, Kalbe M, Shim KC, Erin NI, Steinel NC, Ma L and Bolnick DI** (2017) Resist globally, infect locally: a transcontinental test of adaptation by stickleback and their tapeworm parasite. *The American Naturalist* **189**, 43–57.
- Wedekind C** (1997) The infectivity, growth, and virulence of the cestode *Schistocephalus solidus* in its first intermediate host, the copepod *Macrocyclops albidus*. *Parasitology* **115**, 317–324.
- Wedekind C and Milinski M** (1996) Do three-spined sticklebacks avoid consuming copepods, the first intermediate host of *Schistocephalus solidus*?—An experimental analysis of behavioural resistance. *Parasitology* **112**, 371–383.
- Wedekind C, Strahm D and Schärer L** (1998) Evidence for strategic egg production in a hermaphroditic cestode. *Parasitology* **117**, 373–382.
- Weinreich F, Benesh DP and Milinski M** (2013) Suppression of predation on the intermediate host by two trophically-transmitted parasites when uninfected. *Parasitology* **140**, 129–135.
- Zander CD, Groenewold S and Strohbach U** (1994) Parasite transfer from crustacean to fish hosts in the Lübeck Bight, SW Baltic Sea. *Helgoländer Meeresuntersuchungen* **48**, 89–105.