

fMRI-Adaptation Reveals Dissociable Neural Representations of Identity and Expression in Face Perception

J. S. Winston, R.N.A. Henson, M. R. Fine-Goulden and R. J. Dolan

JN 92:1830-1839, 2004. First published Apr 28, 2004; doi:10.1152/jn.00155.2004

You might find this additional information useful...

This article cites 65 articles, 21 of which you can access free at:

<http://jn.physiology.org/cgi/content/full/92/3/1830#BIBL>

This article has been cited by 3 other HighWire hosted articles:

Object-Selective Cortex Exhibits Performance-Independent Repetition Suppression

R. Sayres and K. Grill-Spector

J Neurophysiol, February 1, 2006; 95 (2): 995-1007.

[\[Abstract\]](#) [\[Full Text\]](#) [\[PDF\]](#)

Perception of facial expression and facial identity in subjects with social developmental disorders

R. L. Hefter, D. S. Manoach and J. J.S. Barton

Neurology, November 22, 2005; 65 (10): 1620-1625.

[\[Abstract\]](#) [\[Full Text\]](#) [\[PDF\]](#)

Representations of faces and body parts in macaque temporal cortex: A functional MRI study

M. A. Pinsk, K. DeSimone, T. Moore, C. G. Gross and S. Kastner

PNAS, May 10, 2005; 102 (19): 6996-7001.

[\[Abstract\]](#) [\[Full Text\]](#) [\[PDF\]](#)

Updated information and services including high-resolution figures, can be found at:

<http://jn.physiology.org/cgi/content/full/92/3/1830>

Additional material and information about *Journal of Neurophysiology* can be found at:

<http://www.the-aps.org/publications/jn>

This information is current as of February 15, 2006 .

fMRI-Adaptation Reveals Dissociable Neural Representations of Identity and Expression in Face Perception

J. S. Winston,¹ R.N.A. Henson,^{1,2} M. R. Fine-Goulden,¹ and R. J. Dolan¹

¹Wellcome Department of Imaging Neuroscience and ²Institute of Cognitive Neuroscience, University College London, London WC1N 3BG, United Kingdom

Submitted 17 February 2004; accepted in final form 23 April 2004

Winston, J. S., R.N.A. Henson, M. R. Fine-Goulden, and R. J. Dolan. fMRI-adaptation reveals dissociable neural representations of identity and expression in face perception. *J Neurophysiol* 92: 1830–1839, 2004. First published April 28, 2004; 10.1152/jn.00155.2004. The distributed model of face processing proposes an anatomical dissociation between brain regions that encode invariant aspects of faces, such as identity, and those that encode changeable aspects of faces, such as expression. We tested for a neuroanatomical dissociation for identity and expression in face perception using a functional MRI (fMRI) adaptation paradigm. Repeating identity across face pairs led to reduced fMRI signal in fusiform cortex and posterior superior temporal sulcus (STS), whereas repeating emotional expression across pairs led to reduced signal in a more anterior region of STS. These results provide neuroanatomical evidence for the distributed model of face processing and highlight a dissociation within right STS between a caudal segment coding identity and a more rostral region coding emotional expression.

INTRODUCTION

Models of face perception propose a dissociation between the representation of identity and other aspects of human faces, for example, emotional expression (Bruce and Young 1986). The “distributed model” (Haxby et al. 2000) posits an anatomical basis for the stages of face perception hypothesized by Bruce and Young (1986). In this model, fusiform cortex—a region known to be activated during simple face perception (Kanwisher et al. 1997; McCarthy et al. 1999; Puce et al. 1995; Sergent et al. 1992)—represents the identity of a perceived face, whereas superior temporal sulcus (STS) represents “changeable aspects” of the face, such as eye gaze and facial expression. Single unit recordings in monkeys (Hasselmo et al. 1989) and studies of human patients with discrete brain lesions (Adolphs et al. 1996; Young et al. 1993) support this model.

Functional imaging studies comparing familiar versus unfamiliar faces also support a role for fusiform cortex in representing facial identity (George et al. 1999; Henson et al. 2000, 2003). However, differences between familiar and unfamiliar faces, such as increased attention to familiar faces (Wojciulik et al. 1998), may confound these findings. Support for dissociable roles of fusiform and STS comes from studies that directed attention to different aspects of face stimuli (Hoffman and Haxby 2000; Narumoto et al. 2001; Sergent et al. 1992, 1994; Winston et al. 2003a). Nevertheless, it is difficult to draw definitive conclusions about the nature of the representations in these regions using such task manipulations, because differ-

ences in activation might reflect processing involved in directing visual attention to the specific aspects of the face required by each task rather than representations of those face components themselves.

Functional imaging studies of emotional facial expression have reported data that seem inconsistent with the distributed model, showing enhanced fusiform activity to emotional compared with neutral faces (Breiter et al. 1996; Dolan et al. 1996; Morris et al. 1998; Pessoa et al. 2002; Surguladze et al. 2003; Vuilleumier et al. 2001; Winston et al. 2003a,b). If fusiform cortex is specialized for identity, it is unclear why it should show this enhanced response to emotional faces. This effect has been attributed to modulatory effects from amygdala, reflecting enhanced attentional processing associated with emotive stimuli (Dolan 2002), but direct evidence for this proposal is sparse (for exceptions, see Morris et al. 1998 and Pessoa et al. 2002).

Functional MRI-adaptation (fMRI-A) is a technique used to infer regional specialization with greater specificity than the subtractive methodology used in the preceding imaging studies. The logic of fMRI-A, outlined previously (Grill-Spector and Malach 2001; Henson 2003; Naccache and Dehaene 2001), can be summarized as follows: if a region contains subpopulations of neurons excited by distinct aspects of stimuli, when two stimuli are shown sequentially in which one of these aspects is repeated, the firing neurons will habituate, and decreased fMRI signal from that region will be seen compared with when that aspect is not repeated. We report here the use of an fMRI adaptation paradigm to test the hypothesis, derived from the distributed model (Haxby et al. 2000), that fusiform cortex would show adaptation when identity was repeated relative to when it changed, and STS would show adaptation when an emotional expression was repeated relative to when it changed. Given our factorial design (Fig. 1B), the prediction was that fusiform cortex should show a significant main effect of identity repetition and STS would show a significant main effect of expression repetitions, but that neither area would show a significant interaction, because the interaction in this experimental design looks for areas showing a co-dependence between identity and expression repetitions.

METHODS

We applied the technique of fMRI-A using a 2×2 factorial design (Fig. 1) to examine the neural basis for extraction of identity and expression from faces. Faces were presented in pairs where identity

Address for reprint requests and other correspondence: J. Winston, Wellcome Department of Imaging Neuroscience, 12 Queen Square, London WC1N 3BG, UK (E-mail: j.winston@fil.ion.ucl.ac.uk).

The costs of publication of this article were defrayed in part by the payment of page charges. The article must therefore be hereby marked “advertisement” in accordance with 18 U.S.C. Section 1734 solely to indicate this fact.

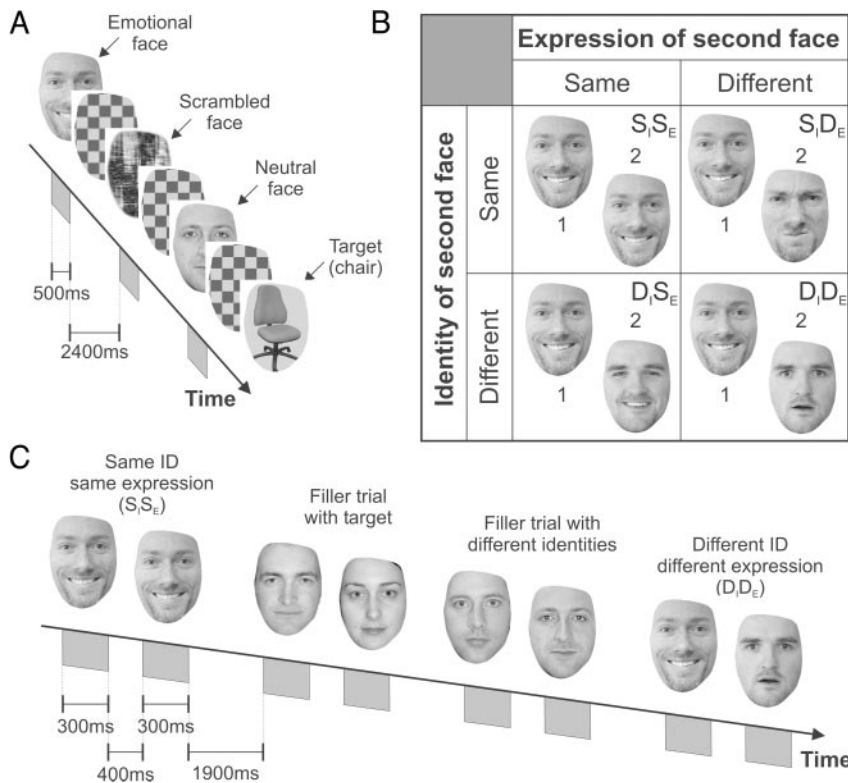


FIG. 1. Study design and example stimuli. *A*: in the localizer phase, subjects pressed a button when they saw chairs among a run of face and scrambled face stimuli. Stimuli were presented for 500 ms, with a 2,400-ms gap during which a static checkerboard within a face outline was presented. *B*: 2×2 factorial design of adaptation phase. Trials in this phase consisted of a pair of faces that could display the same or different identity and (independently) the same or different emotion. Note that even S_1S_E trials do not consist of identical stimuli, as the stimulus set offers 2 photographs of each individual displaying each emotion, taken on different days (please note that the stimuli used in the experiment were from the Karolinska Directed Face database whereas those depicted are from the authors' collection). Five different expressions (anger, disgust, fear, happiness, and sadness) and 5 different identities were used. Note that the interaction in this factorial design does not pertain to regions showing specialization for identity or expression processing; instead, it tests for an adaptation to expression that depends on identity changes (or vice versa). *C*: example run and timing of 4 trials from the adaptation phase. Targets were rare (10%) trials containing female faces. Trials of interest were always separated by at least 1 filler trial consisting of neutral male faces that could either show the same identity or different identities. Similar to the localizer session (*A*), but not shown for clarity, a face-outlined static checkerboard separated all face stimuli.

and expression of the second face could independently repeat or change with respect to the first face. Such immediate repetition induces robust fMRI adaptation (Epstein et al. 2003; Kourtzi and Kanwisher 2001). We refer to trials in which identity was repeated as " S_1 " and use " D_1 " to indicate a change in identity across a face pair. Similarly, trials where expression is held constant or changed are labeled as " S_E " or " D_E ," respectively. Thus a trial in which identity was unchanged but expression varied is referred to as " S_1D_E ."

Stimuli

The stimuli were a selection of five male faces from the KDEF database (Lundqvist and Litton 1998; The Karolinska Directed Emotional Faces, Department of Clinical Neuroscience, Psychology Section, Karolinska Institute). A major advantage of using this database is that it contains two exemplars of each expression for each identity. This allowed the use of different images for the first and second faces in the adaptation session for all trial types, even S_1S_E . The five specific identities (males 13, 14, 16, 23, and 24) were selected on the basis of successful emotion recognition by nine subjects who took part in a pilot study judging the emotions expressed across the entire database. All face stimuli showed head and eye-gaze direction that were forward-facing toward the viewer. Five emotions were used in the study: anger, disgust, fear, happiness, and sadness. One exemplar of each expression (series "A") was nominated as the prime face and the second (series "B") as the second face for the adaptation phase. Stimuli were converted to grayscale and equated for mean luminance in Matlab (The Mathworks, Natick, MA) and cropped to a standardized outline in Photoshop (Adobe, San Jose, CA). Faces for the filler trials were neutral male faces from a variety of sources and were prepared similarly to emotional faces, as were chairs and female faces (the targets in the localizer and adaptation phases, respectively). One hundred scrambled faces for the localizer session were derived from the 50 emotional faces and 50 neutral male faces used in that session by permuting the phase of each spatial frequency in the image while maintaining a constant power density spectrum and cropping to the same outline.

Subjects

Sixteen right-handed healthy subjects gave informed consent to take part in the study, which was approved by the local ethics committee. Data were rejected from two of these subjects: one because of gross head movement during fMRI scanning and the second due to an incidental structural abnormality that made normalization of scans difficult. Age range of included subjects was 18–29 yr (mean, 23 yr), and there were seven males. Subjects had normal or corrected-to-normal vision.

fMRI experiment

There were three sessions to the fMRI component of the study. The first was a face localizer session, designed to familiarize participants with face stimuli and provide a generic map of face- and expression-responsive brain regions. The second and third sessions were adaptation sessions and were split only for subject comfort. In the first ("localizer") session, subjects' task was chair detection—they responded on an MRI-compatible button box when they saw a chair. The stimuli seen in this session were the 50 emotional faces from critical trials of the second and third ("adaptation") sessions, 50 neutral male faces, 100 scrambled faces, and 20 chairs. In the adaptation phase, the task was to press the button when a female face appeared. In this way, trials of interest in all sessions were uncontaminated by motor response, and repetition of faces was incidental to the subject's task. A number of different trial types occurred in the adaptation phase. The four trial types of interest consisted of a pair of emotional faces that could exhibit the same or different identities, crossed with the same or different emotional expression (Fig. 1*B*). In addition, between any pair of trials of interest, one or two "filler trials" occurred to reduce the predictability of repetition. Three types of filler trials were used: "repeated fillers," in which the face pair consisted of two neutral faces of the same identity; "different fillers," consisting of a pair of neutral male faces of different identities; and "target trials," containing a neutral male and a neutral female face (which could be either the 1st or 2nd face of the pair). In total, 80 repeated filler trials,

60 different filler trials, and 20 target trials occurred in each of the two sessions. Twenty-five trials of interest occurred for each of the four trial types in each session. Because there is only one way of combining the faces to produce S_1S_E trials, but multiple ways of combining to produce the other trial types, the face pairs used for such trials were counterbalanced across subjects, with the constraint that each first face occurred once in each condition and each second face once in each condition within each session.

fMRI scanning

A Siemens 1.5T Sonata system (Siemens, Erlangen, Germany) was used to acquire blood oxygenation level dependent (BOLD) contrast-weighted echoplanar images (EPIs) for functional scans. Volumes, which consisted of 24 horizontal slices of 2 mm thickness with a 1 mm gap, were acquired continuously every 2.16 s. This sequence was sufficient to obtain coverage from above the corpus callosum to below the inferior temporal lobes, thus including all regions of interest in this study: fusiform, amygdala, STS, inferior frontal cortex, and orbito-frontal cortex (Fig. 2). In-plane resolution was 3×3 mm. The first six volumes were discarded to allow for T1 equilibration effects. Subsequent to functional scans, a T1-weighted structural image ($1 \times 1 \times 1$ mm resolution) was acquired for co-registration and display of the functional data. Because of the difficulty of normalizing limited field-of-view EPIs, we additionally acquired whole brain EPIs in each subject for improved normalization.

Spatial preprocessing

fMRI data were spatially preprocessed using SPM2 (Wellcome Department of Imaging Neuroscience, London; <http://www.fil.ion.ucl.ac.uk/spm>). The volumes were co-registered (Friston et al. 1995a) and normalized to an EPI template corresponding to the MNI reference brain in Talairach space. The normalization parameters for each subject's EPIs were obtained by normalizing the whole brain EPIs acquired after the experimental session. The limited field of view EPIs were co-registered with the raw whole brain images (Collignon et al. 1995) and normalized by applying the parameters calculated for normalization of the whole brain images. Normalized images were smoothed using an 8-mm Gaussian kernel to account for residual intersubject differences and to allow statistical inference using Gaussian random field theory.

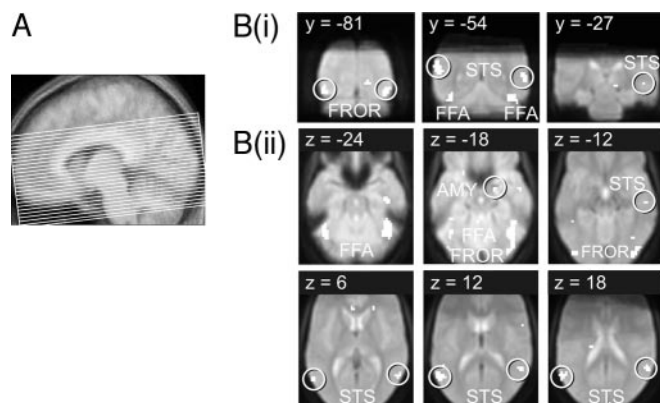


FIG. 2. Functional MRI (fMRI) coverage and results of localizer session. *A*: sagittal slice from group mean T1 structural image showing approximate location of 24 slices for functional imaging sequence. This sequence yielded coverage of inferior temporal cortex up to superior temporal sulcus, including amygdala, orbitofrontal cortex, and fusiform cortices. *B*: coronal (*i*) and horizontal (*ii*) sections of group mean echoplanar image (EPI) showing mask derived from contrasts of faces > scrambled faces and emotional face > neutral faces. Note that the mask covers bilateral fusiform cortex (FFA), face-responsive occipital region (FROR), superior temporal sulcus (STS), and right amygdala (AMY).

Data analysis

Data analysis used SPM2, applying a mass univariate general linear model (GLM) (Friston et al. 1995b). First, delta functions were constructed corresponding to the onset of each event type and for button presses in the adaptation phase to accommodate false alarms. These delta functions were convolved with a synthetic hemodynamic response function to create regressors for the subsequent GLM. Also included in the model were six movement parameters estimated by the realignment stage, regressors representing session effects, and for the adaptation sessions, three regressors of no interest corresponding to the potential confound of similarity between face pairs (see *Visual similarity between face pairs*). Serial autocorrelations were modeled using an AR(1) process, and the data were high-pass filtered at 1/128 Hz. Linear contrasts pertaining to the main effects and interaction of the factorial design were calculated. Consistent effects across subjects were tested using the resultant contrast images in a one-sample *t*-test (conforming to a "random effects" model). The model for the localizer session included separate regressors for the distinct facial expressions. Because no significant ($P < 0.05$, uncorrected) interactions with emotion type were detected in regions of interest (see also Winston et al. 2003a), we modeled the adaptation sessions without reference to different emotion types. Statistical threshold was set at $P < 0.05$, corrected for multiple comparisons across a small volume of interest, using a mask derived from the localizer session (see *Mask-defining regions of interest*).

Mask-defining regions of interest

Regions of interest were defined using two statistical results from the localizer session. First, we tested for effects of faces > scrambled faces and thresholded the result at $P < 0.001$ (uncorrected). We next tested for emotional faces > neutral faces and thresholded this result at $P < 0.001$ (uncorrected). The two resulting masks were combined using a logical OR function, yielding the combined mask (Fig. 2) that was subsequently used for small volume correction (SVC) (Worsley et al. 1996).

Visual similarity between face pairs

It could be argued that changes in identity and expression across a pair of faces do not represent only categorical changes, but also a variation in a continuous spectrum of visual similarity. Thus, for example, a pair of faces with the same identity and expression are likely to be more visually similar than a pair where identity is the same but the expression different. To avoid this potential confound affecting fMRI data analysis, three measures of visual similarity were collected and included in fMRI data analysis as covariates of no interest. The first two were image-based metrics, derived from mathematical analysis of image pairs. These were derived from normalized least squares measures of differences between face pairs. Briefly, faces were normalized for luminance, and the second face was subtracted from the first. The root mean square of the value at each pixel of this difference image was the difference score for a given image pair. In a refinement of the technique that accounted for minor differences in co-registration of salient features, faces were allowed to move over one another by ≤ 25 pixels in either plane, and the minimum resulting value was taken as the difference score (Vogels et al. 2001). The third measure adopted was derived from an independent group of subjects (see *Control data on explicit tasks for identity/expression detection*) who each saw 200 face pairs (50 of each trial type) presented with the same parameters as the imaging component of the study and rated each pair for visual similarity. The three ratings were in good agreement (Table 1). All three were included in the main statistical model as regressors of no interest by generating a design matrix in SPM whereby all events of interest were modeled as one trial type that was modulated parametrically by expansions to model

TABLE 1. Similarity measures for different event types

	$S_I S_E$	$S_I D_E$	$D_I S_E$	$D_I D_E$
Computer measure 1	0.86 (0.002)	0.63 (0.013)	0.44 (0.012)	0.38 (0.019)
Computer measure 2	0.84 (0.003)	0.61 (0.011)	0.44 (0.020)	0.39 (0.014)
Human measure	0.88 (0.005)	0.53 (0.028)	0.46 (0.014)	0.24 (0.036)

Values are means \pm SD. Measures for pairs of stimuli were scaled from 0 to 1 and averaged across the trials used in the fMRI experiment. Higher values represent more similar face pairs. "Computer measure 1" represents the minimum value for the RMS difference between image pairs allowing a 25-pixel displacement in any direction; measure 2 represents the value with no displacement. The human measure results from a cohort of subjects who rated the similarity of face pairs on a visual analogue scale.

the three similarity confounds. The columns pertaining to similarity confounds were extracted and used in the model described above.

Analysis of eye-tracking data

fMRI differences in regions such fusiform cortex could be attributable to variations in visual attention with trial type (Wojciulik et al. 1998), and differences in emotionally responsive regions such as amygdala would be similarly attributable to variations in arousal (Critchley et al. 2002). To explore whether such differences might exist, we used on-line eye-tracking. Data were acquired during scanning for a majority of subjects using an ASL504LRO eye-tracker (Applied Science Laboratories, Bedford, MA). Specifically, accurate pupillometry was achieved in nine subjects during the scanning session, and accurate eye-gaze tracking was achieved in eight. Pupillometry data were analyzed by defining a window of 1.2 s after the second face and measuring the minimum, maximum, and mean pupil diameter during averaged traces (low-pass filtered at 7.5 Hz and baselined for the onset of the 2nd face) from this window for each subject. These three measures were entered into separate 2×2 ANOVAs. Eye-gaze direction was also assessed using a summary statistic approach. For each of the four critical trial types, spatial maps of eye-gaze density were constructed. Each of these maps was compared with the mean map, and difference images constructed. The root mean squares of the density difference values for these latter maps were entered into a 2×2 ANOVA.

Control data on explicit tasks for identity/expression detection

An important consideration is the possibility that subjects might not have noticed repetition of identity or expression of faces within each pair. Furthermore, if a change in one dimension (e.g., the expression of the faces) affected subjects' ability to detect repetition of the other dimension (e.g., the identity of the faces), interactions between the two dimensions detected by fMRI would be difficult to interpret (in that a decrease in the fusiform response for $S_I D_E$ trials relative to $S_I S_E$ trials, for example, could simply reflect a reduction in the number of trials in which subjects realized it was the same identity). Control behavioral experiments were conducted to test these possibilities. An independent group of 16 subjects (age range, 22–36 yr; mean age, 28.5 yr; 11 males; 2 left-handers) completed three behavioral tasks, using identical procedural parameters to those in the imaging study. In the first task, they rated pairs of faces presented for visual similarity using a computer-based visual analogue scale (providing the subjective measures of similarity mentioned above). In the second and third tasks, they classified face pairs as exhibiting either the same or different identity or the same or different emotional expression, with the order of identity/expression task and the buttons used for same/

different responses counterbalanced over subjects. In all, each subject performed 50 trials of each type for each task. A short (25 trial) practice session preceded each task.

RESULTS

Behavioral data during scanning

Subjects detected $99 \pm 2\%$ (SD) of targets (chairs) in the localizer (false alarm rate, $0.2 \pm 0.4\%$) and $88 \pm 7\%$ of targets (female faces) in the adaptation phase (false alarm rate, $7 \pm 6\%$).

The two measures derived from the eye-tracking data from the fMRI scanning sessions showed no significant differences between the four trial types of interest (for gaze direction, all $F_{(1,7)} < 0.125$, all $P > 0.7$; for pupil diameter, all $F_{(1,8)} < 2.1$, all $P > 0.18$, except a marginal trend for an interaction between identity and expression repetitions in the minimum pupil constriction: $F_{(1,8)} = 4.0$, $P = 0.08$). These nonsignificant results suggest that there were no detectable differences in visual attention (indexed by eye-gaze direction) or arousal (indexed by pupil diameter changes) between the different experimental conditions.

Localizer phase

The results of the two *t*-tests performed on the data from the localizer phase, faces $>$ scrambled faces and emotional $>$ neutral faces, are shown in Fig. 2. As expected, the activated regions included bilateral fusiform and more posterior occipital areas, as well as STS and amygdala. The two contrasts were combined to create a mask of regions that responded to faces and/or facial expression. This mask defined a search region for the subsequent comparisons in the adaptation phase, allowing a principled means for correcting for multiple comparisons over voxels.

Adaptation phase: main effect of repeated identity

As predicted, a significant main effect of repeated identity [reduced response when the 2nd face exhibited the same identity as the 1st; $(D_I S_E + D_I D_E) > (S_I S_E + S_I D_E)$] was seen in right fusiform cortex ($x, y, z = 39, -60, -15$; $Z = 3.76$; $P < 0.05$, 1-tailed, SVC for the localizer mask; Fig. 3). In addition, adaptation for repeated identity was seen in right posterior STS (STSp; $x, y, z = 63, -51, 15$; $Z = 3.73$; $P < 0.05$ SVC; Fig. 4). Because an interaction or main effect of repeated expression would influence interpretation of these results, we examined for such effects at reduced threshold. In the peak right STSp voxel, a marginally significant main effect of repetition of expression was evident ($Z = 1.74$; $P < 0.05$, 1-tailed, uncorrected), whereas in fusiform, no such effect was evident ($Z = 0.99$, $P > 0.1$, 1-tailed, uncorrected). There was no evidence for an interaction in the peak fusiform voxel ($Z = 1.26$, $P > 0.2$, 2-tailed, uncorrected) or in the right STSp ($Z = 0.50$, $P > 0.2$, 2-tailed). Although simple effects are not conventionally inspected in the absence of a significant interaction, we checked whether changing expression modulated fusiform responses either in the context of identity remaining constant or changing. In neither case was there a significant effect (simple effect of D_E relative to S_E with a change in identity, $P = 0.93$;

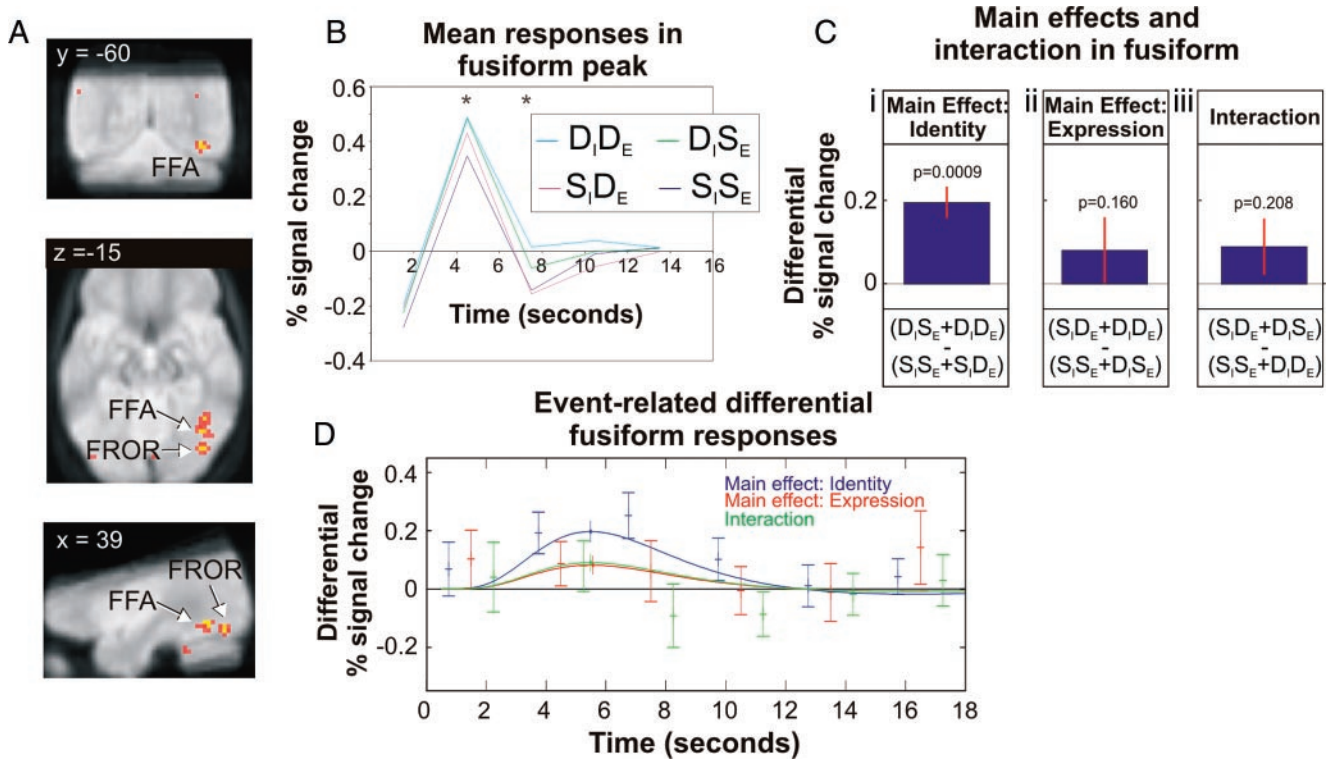


FIG. 3. Fusiform cortex shows fMRI-adaptation (fMRI-A) for repeated identity. *A*: statistical parametric map (SPM) overlaid on group mean EPI showing activation in posterior occipital and fusiform cortices. Fusiform peak at $x, y, z = 39, -60, -15$; $Z = 3.76$. The more posterior activation (FROR) is at $x, y, z = 42, -75, -18$; $Z = 3.59$ but does not correct for the volume of the mask. Red, $P < 0.01$ uncorrected; yellow, $P < 0.001$ uncorrected. Results are displayed masked using the results from localizer scan (with the latter thresholded at $P < 0.05$ uncorrected). *B*: mean response profiles for different event types from peak fusiform coordinates. Data derived from a finite impulse response (FIR) model with 3-s time bins. *Time-points where the relevant main effect (adaptation for same identity trials) is significant at $P < 0.05$ in the FIR model. *C*: differential effects in peak fusiform voxel using data from the main model for the 3 contrasts tested [1] main effect of identity, 2) expression, and 3) their interaction]. Bars represent the mean parameter estimate across subjects of the canonical hemodynamic response function; error bars represent SE. P values represent t -test of the mean difference from 0. t -Tests are 1-tailed for main effects and 2-tailed for the interaction term. Note that the interaction is not a comparison of the 2 main effects and therefore would not be significant for an area selective for either identity or expression. *D*: differential responses in peak fusiform voxel with time. Differential effects derived from 3-s time bin FIR model and from fitted responses of main model are shown (FIR data points for the main effect of identity are shifted backward by 0.75 s, and for the interaction, forward by 0.75 s, for legibility).

with identity constant, $P = 0.14$). A more posterior region of right occipital cortex, possibly corresponding to a face-responsive occipital region (FROR), showed uncorrected repetition effects but failed to withstand correction for multiple comparisons across the volume of the mask ($x, y, z = 42, -75, -18$; $Z = 3.59$; $P = 0.071$ SVC; see Fig. 3A).

Adaptation phase: main effect of repeated expression

A region of right STS anterior to that described above was shown to be less active when the second face exhibited the same expression as the first face [Fig. 5; $(S_1D_E + D_1D_E) > (S_1S_E + D_1S_E)$]. This activation corrected for multiple comparisons across the volume of our mask ($x, y, z = 57, -18, -12$; $Z = 3.80$; $P < 0.05$, 1-tailed, SVC). Despite the apparent trend toward an interaction in Fig. 5B, this was not significant when tested at a lenient statistical threshold ($Z = 1.06$, $P > 0.2$, 2-tailed, uncorrected). Similar to the fusiform region, we checked for significant simple effects (D_1 relative to S_1) opposite to the detected main effect and found no significant differences in the context of expression changing ($P = 0.14$) or being held constant ($P = 0.97$).

Region-by-condition interaction

To determine whether the differences in detectable main effects between the mid-STS region and fusiform were significant, we undertook a region-by-condition interaction using a 3-mm sphere centered on each peak. A significant three-way interaction was obtained ($P < 0.05$) in the direction predicted by the distributed model (adaptation to identity in fusiform and to expression in STS).

Adaptation phase: interaction

No areas within the mask defining our regions of interest showed an interaction between identity and expression.

Control experiments

One potential confound in our design is the presence of differences in the visual similarity between face pairs of different trial types. To account for this confound, we obtained mean subjective and objective similarity measures for the four different trial types (Table 1). The subjective data were obtained from an additional behavioral experiment (see METHODS).

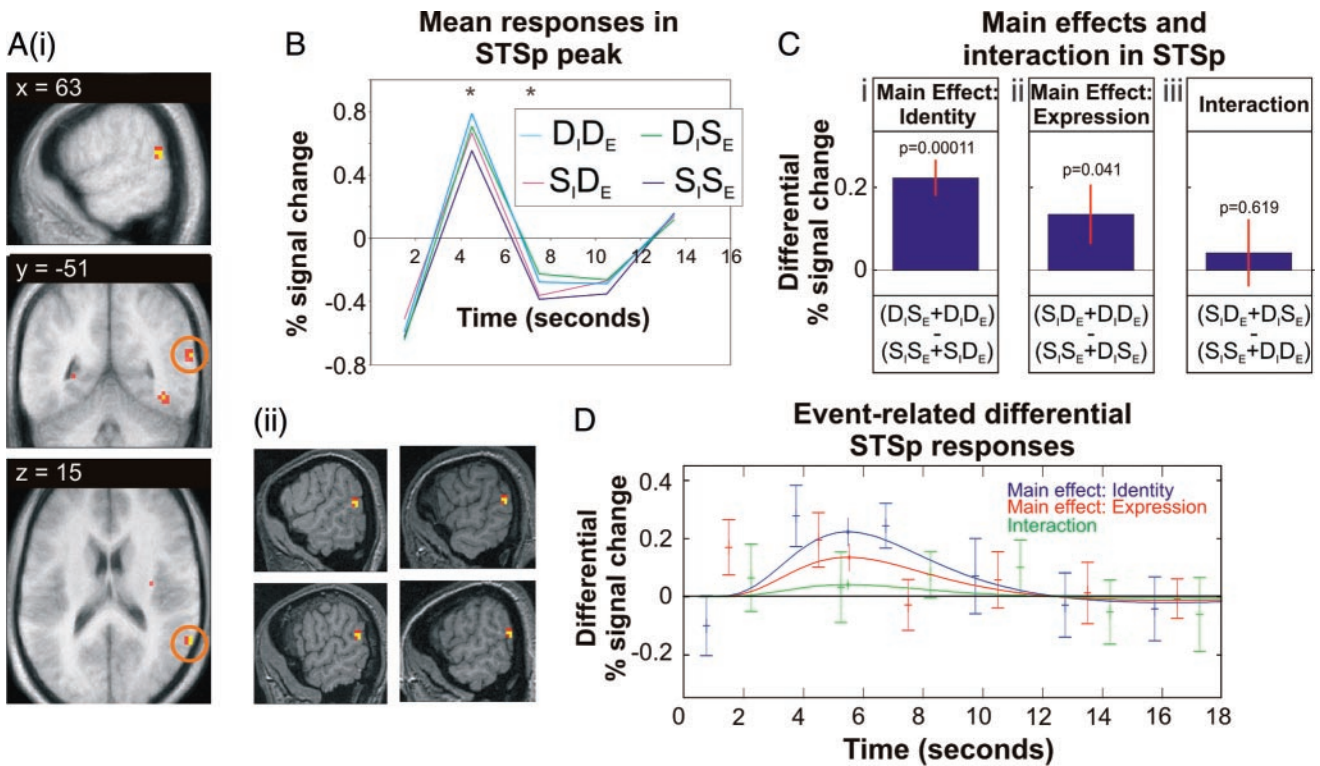


FIG. 4. Posterior STS shows fMRI-A for repeated identity. *A*: posterior STS ($x,y,z = 63,-51,15$; $Z = 3.73$) shows greater response to trials with different identities for the 2nd face than repeated identities. This region appears to be around the posterior horizontal segment, although the anatomy is somewhat variable from subject to subject (*Aii*). Display as in Fig. 3*A*. *Aii*: group result data shown on single subject T1 structurals to aid localization. *B*: mean response profiles in peak posterior STS (STSp) voxel, derived from 3-s time bin FIR model. Display as in Fig. 3*B*. *C*: differential effects in peak STSp voxel using data from the main model for the 3 contrasts tested. Display as in Fig. 3*C*. *D*: differential responses in peak STSp voxel with time. Display as in Fig. 3*D*.

All three measures showed significant differences between the four trial types (all $F_{(1,13)} > 190$, all $P < 0.001$). $S_I S_E$ pairs were more similar than the other three types, despite our use of different images in this condition. Unsurprisingly, and consistent with the concept of identity as an invariant feature of the face, trials with same identity had greater similarity than trials with different identity. To account for these differences, we included all three measures as covariates of no interest in the analysis of the fMRI data (see METHODS), which removed any linear contribution of similarity to the above fMRI findings. A random effects analysis of the contribution of these regressors to the model (using an F -contrast spanning the 3 regressors in an ANOVA model) suggested that they were explaining effects in visual regions, although not within the mask used for SVC (e.g., peaks at $x,y,z = -51,-60,-6$, $Z = 3.76$; $x,y,z = 9,-78,9$; $Z = 3.46$; $x,y,z = 54,-45,-15$, $Z = 3.39$; $x,y,z = 30,-60,-15$, $Z = 3.38$; all $P < 0.001$ uncorrected).

An additional concern, noted above, is that subjects might not notice repetitions of identity or expression or that the presence of repetition in one dimension would affect behavior to the other dimension. Data from a behavioral experiments on a separate subject cohort (see METHODS) showed that the mean accuracy in an identity discrimination task was 88% for trials when expression was held constant and 83% for trials when expression changed (paired t -test: $Z = 3.78$, $P < 0.001$). This was paralleled by slower reaction times (RTs) when judging identity in the context of expression changes (806 vs. 773 ms, $Z = 3.33$, $P < 0.001$). Mean accuracy for the emotion dis-

crimination task was 87% when identity was unchanged across the face pair and 80% when identity changed ($Z = 3.53$, $P < 0.001$). Again, RTs were slower on trials where the task-irrelevant dimension (identity) changed compared with being held constant (888 vs. 848 ms, $Z = 4.41$, $P < 0.001$). These data show that people's ability to detect repetition of identity or expression with these stimuli was generally high. The data also suggest that changes in one dimension do affect sensitivity to repetition of the other dimension. This behavioral interaction does not, however, confound our findings of two orthogonal main effects in the fusiform/STSp and mid-STSp regions.

DISCUSSION

In this study, we used event-related fMRI-A to identify the neuroanatomical basis for coding different aspects of faces, specifically identity and expression, in the human brain. By presenting pairs of faces in which the identity and emotional expression of a second face could accord or vary with respect to the first, we showed that discrete brain regions show a reduced BOLD signal when a specific dimension was repeated relative to when it changed. Specifically, posterior lateral right fusiform cortex and posterior right STS exhibited adaptation for identity, whereas right mid-STSp showed adaptation for emotional expression. These differences do not relate to any obvious measure of visual similarity between faces in each pair, given that we co-varied out both objective and subjective measures of similarity. In addition, we found no evidence that

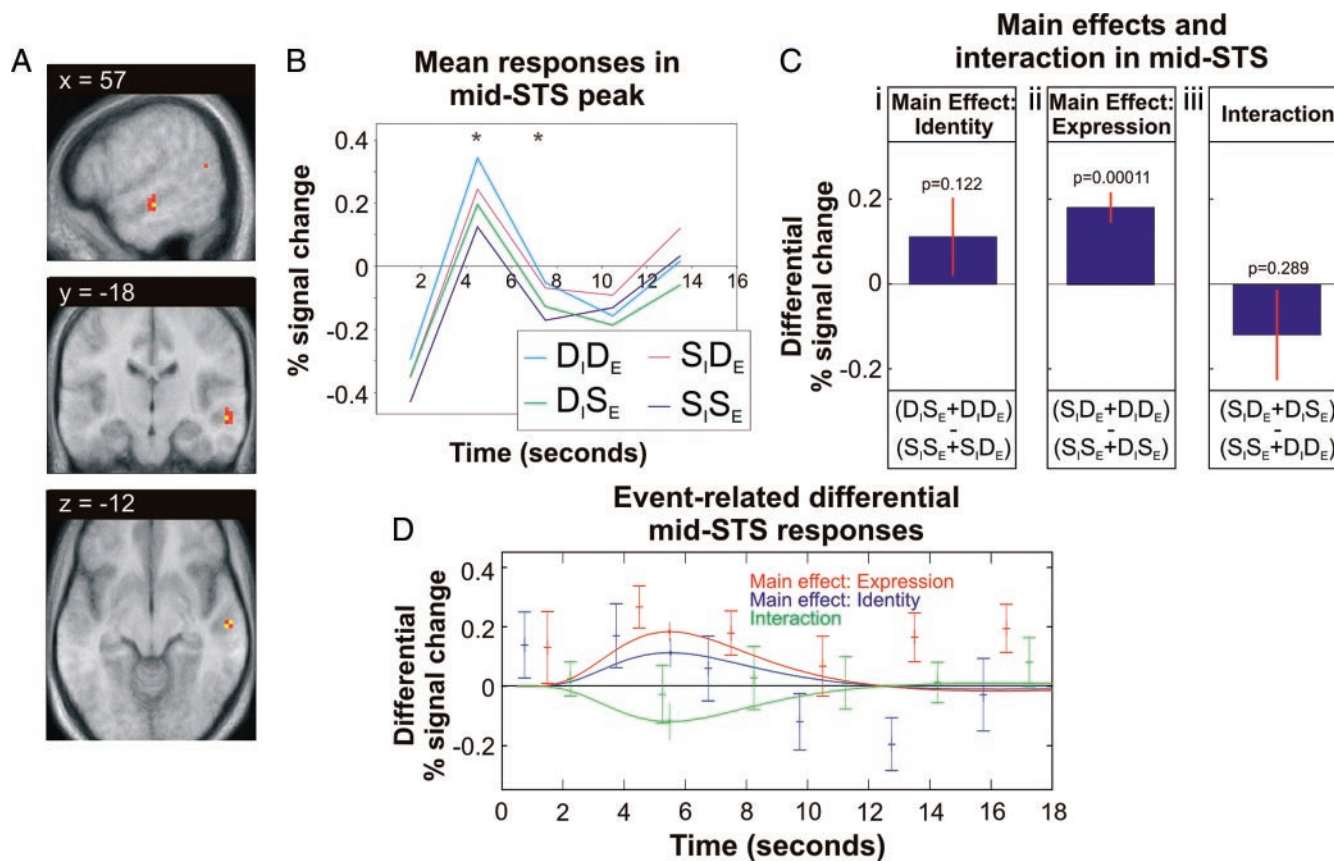


FIG. 5. Mid-STS shows fMRI-A for repeated emotion. *A*: mid-STS ($x, y, z = 57, -18, -12$; $Z = 3.73$) shows greater response to trials with different expressions for the 2nd face than repeated expression. Display as in Fig. 3*A*. *B*: mean response profiles in peak mid-STS voxel, derived from 3-s time bin FIR model. Display as in Fig. 3*B*, except asterisks now represent significant differences for the main effect of emotion repetition. *C*: differential effects in peak mid-STS voxel using data from the main model for the 3 contrasts tested. Display as in Fig. 3*C*. *D*: differential responses in peak mid-STS voxel with time. Display as in Fig. 3*D*.

the effects we observed could be attributed to differences in eye movement or arousal. Control data showed that subjects' explicit ability to detect changes in identity or in expression was generally high. Although performance was reduced when the other dimension changed, which might confound any interaction between identity and expression on the levels of adaptation, this observation cannot explain the simultaneous finding of two orthogonal main effects in the imaging data.

In the distributed model of face processing (Haxby et al. 2000), a dissociation is posited between processing of invariant and changeable aspects of faces. Specifically, it is suggested that invariant features are coded in ventral occipital and temporal cortex in the lateral fusiform region (also known as the "face area"; Kanwisher et al. 1997), whereas changeable aspects are coded by right STS. Our data broadly support this model. Within the framework of fMRI-A, our demonstration of a main effect of repeated identity in right fusiform cortex indicates this region represents identity, an invariant aspect of human faces. Although previous studies have shown repetition decreases to faces in fusiform cortex (Gauthier et al. 2000; George et al. 1999; Henson et al. 2000, 2003), to our knowledge, this study is the first to show repetition effects in fusiform cortex across dramatically different views of the same identity (i.e., with different expressions). In our view, this finding is important because it suggests that face representations in this region encode not just a specific visual image but

a more abstract representation of facial identity (see also Eger et al. 2004; Vuilleumier et al. 2003a).

A consistent finding in neuroimaging studies of emotional face perception is activation of fusiform cortex in perception of emotional relative to neutral faces (Breiter et al. 1996; Dolan et al. 1996; Morris et al. 1998; Pessoa et al. 2002; Surguladze et al. 2003; Vuilleumier et al. 2001; Winston et al. 2003a,b). This has been interpreted as relating to enhanced attentional processing associated with arousing emotional faces relative to nonarousing neutral faces (Dolan 2002). However, an alternative explanation is that this region encodes the emotionality of the face, resulting in enhanced activation when expressive faces are presented. The use of an adaptation paradigm in this study enables us to potentially dissociate between these possibilities. If this region coded for specific expressions, it should have shown adaptation for expression, akin to that for identity. The lack of evidence for adaptation for repeated expressions is consistent with the former interpretation that fusiform modulation is mediated by an amygdala-associated effect (although we note that this inference is based on a null result). At the very least, it seems that any bottom-up effects of expression in right fusiform cortex are of less importance than those of identity, i.e., it exhibits relative preference for identity processing from faces.

In contrast to right fusiform, a focus in right mid-STS showed a main effect for repetition of emotional expression,

with repeated expressions associated with reduced activation relative to differing expressions. This agrees with a role for this region in coding the specific emotion expressed in a face. We were surprised by the anterior locus of this activation, which fell at -18 on the anterior-posterior axis. Previous studies concerning facial expression have reported activation in right STS in a more posterior locus (around -35 to -60 mm) (Critchley et al. 2000; Iidaka et al. 2001; Narumoto et al. 2001; Winston et al. 2003a). This more anterior locus is, however, within the portion of STS reported as activated in studies of social cues (Allison et al. 2000; Martin and Weisberg 2003; Ojemann et al. 1992; Saxe and Kanwisher 2003). We have additionally checked our previous data for activation in this area and found it was activated in an explicit emotional judgment task relative to a gender judgment task ($x,y,z = 52, -16, -18$; $Z = 3.96$; see Fig. 5A in Winston et al. 2003a). Note also that this region fell within our face localizer mask, and by definition, is responsive to faces or facial expression.

Posterior STS, like the fusiform, showed adaptation to repeated identity. This is contrary to a previous study that failed to observe repetition effects in this region (Henson et al. 2003), although that study used much longer repetition lags. A role for posterior STS in processing personal identity is, however, consistent with a recent human lesion study describing a patient with an infarct in the vicinity of left STS who described novel faces as familiar (Vuilleumier et al. 2003b). Unlike fusiform, however, posterior STS showed a trend toward an additive main effect for repeated emotion, implying that its role in face processing may be multifaceted. Intriguingly, in a recent re-analysis of single neuron data from monkeys, Tiberghien et al. (2003) suggested that all facial features contribute to distinguishing identity, whereas only a subset determine facial expression. They hypothesize that, as a consequence, inferior temporal regions in monkeys may contain identity-selective neuronal populations, while STS might contain populations sensitive to identity and expression. Such a view fits with our demonstration of identity repetition in posterior STS and sensitivity to expression in posterior and mid-STS. However, with regard to the human lesion literature, the majority of reported prosopagnostic patients described have inferior occipitotemporal rather than lateral temporal lesions (see e.g., Damasio et al. 1990; Wada and Yamamoto 2001), presumably corresponding to fusiform rather than STS (but see Fig. 1A in Tranel et al. 1997; see also Rossion et al. 2003). In addition, monkeys with STS lesions appear to have only minor identity discrimination deficits (Heywood and Cowey 1992), and recent evidence from multidimensional scaling analysis of single neuron data from monkey STS and inferior temporal (IT) cortex also suggests that STS is more concerned with analysis of facial view and the code in IT is more concerned by facial identity (Eifuku et al. 2004). This apparent discrepancy with our result of posterior STS responsivity to identity might be explained in a number of ways. First, it is possible that activation in this region is epiphenomenal and of no functional consequence for identity recognition. However, it is also possible that our stimuli tax identity processing across different views of a face, and the role of STS in processing different views of face stimuli is well known (Eifuku et al. 2004; Perrett et al. 1985, 1991). In addition, it has been shown that STS neurons in the macaque monkey process identity, at least in the form of a population code (Baylis et al. 1985), and there is

evidence that single neurons in STS code for the same identity across different face views and other STS cells code conjunctions of identity and view (Perrett et al. 1991). It may be the case that the aspect(s) of identity processing that occur in STS do not commonly lead to complaints of prosopagnosia or that tests designed to probe prosopagnosia are relatively insensitive to these aspect(s) of identity processing. As an unpredicted, although significant activation, we would like to see this effect of adaptation for repetitions of identity across different views replicated before drawing strong conclusions.

Previous work has implicated other brain regions in processing facial expressions, most notably the amygdala (Breiter et al. 1996; Morris et al. 1996; Pessoa et al. 2002; Vuilleumier et al. 2001; Whalen et al. 1998; Winston et al. 2003a). There are a number of potential reasons why we did not detect adaptation in this region. One possibility is that amygdala responses are emotion-specific, with greatest responses to fearful faces (Calder et al. 2001), and thus our collapsing across different expression subtypes may have obscured emotion-specific responses. Alternatively, the amygdala might code for facial expression in a different manner from cortical regions such as STS, with a nonspecific code, whereby responses are dependent on the arousal engendered by the emotion (H. D. Critchley, P. Rothstein, and R. J. Dolan, unpublished observations). Another possibility is that an expression-specific amygdala response may be insensitive to adaptation, although this seems unlikely, given positive findings concerning the amygdala and stimulus repetition (Ono and Nishijo 2000; Rotshtein et al. 2001).

Although identity and emotion may be processed by partially dissociable neural pathways, the two pathways are likely to interact in production of behavioral responses. This would appear to be the case for our explicit identity and emotion detection tasks, in which a change in one dimension (identity or emotion) impaired ability to detect changes in the other dimension. In behavioral studies, other authors have also found evidence for the nonindependence of identity and emotion processing (Ganel and Goshen-Gottstein 2004; Schweinberger and Soukup 1998; Schweinberger et al. 1999). A further brain region may be responsible for the integration of distinct aspects of the face that we failed to detect in this study. A more explicit behavioral task during fMRI may help to clarify this issue in future studies.

One issue that deserves consideration is the meaning of BOLD changes in adaptation paradigms such as this. It has been shown that local field potentials (LFPs) correlate with the BOLD signal better than multi- or single-unit activity in the macaque monkey (Logothetis et al. 2001). Thus a region showing fMRI-A may not be transmitting fewer spikes but may either be showing a reduced afferent input or reduced local processing. This highlights one possible dissociation between fMRI-A and response suppression as recorded in single unit work in monkeys (Desimone 1996). We do not think that fMRI experiments based on adaptation are uniquely problematic in this regard, but this is a more general interpretational issue for unifying electrophysiological and fMRI work (see Henson and Rugg 2003 for a more extensive discussion of hemodynamic decreases and response suppression).

In conclusion, we have shown that fusiform cortex shows fMRI-A when the identity of a face is repeated, and a region of STS shows adaptation when the emotional expression of a face

is repeated. The response profiles of these two regions were significantly different in the directions predicted by the distributed model of face processing (Haxby et al. 2000), and we suggest that our findings are generally consistent with this model. However, an adaptation response in posterior STS to repeated identity suggests that STS may also manifest a degree of functional segregation in face perception.

ACKNOWLEDGMENTS

We thank J. O'Doherty and the radiographers at the FIL for assistance with scanning, and P. Bentley, J. Gottfried, J. Kilner, P. Vuilleumier, and P. Rotshtein for helpful discussions. We thank J. E. Litton for the KDEF stimuli data.

GRANTS

This work was carried out under a Wellcome Trust Programme Grant to R. J. Dolan. R.N.A. Henson is supported by the Wellcome Trust.

REFERENCES

- Adolphs R, Damasio H, Tranel D, and Damasio AR.** Cortical systems for the recognition of emotion in facial expressions. *J Neurosci* 16: 7678–7687, 1996.
- Allison T, Puce A, and McCarthy G.** Social perception from visual cues: role of the STS region. *Trends Cogn Sci* 4: 267–278, 2000.
- Baylis GC, Rolls ET, and Leonard CM.** Selectivity between faces in the responses of a population of neurons in the cortex in the superior temporal sulcus of the monkey. *Brain Res* 342: 91–102, 1985.
- Breiter HC, Etcoff NL, Whalen PJ, Kennedy WA, Rauch SL, Buckner RL, Strauss MM, Hyman SE, and Rosen BR.** Response and habituation of the human amygdala during visual processing of facial expression. *Neuron* 17: 875–887, 1996.
- Bruce V and Young A.** Understanding face recognition. *Br J Psychol* 77: 305–327, 1986.
- Calder AJ, Lawrence AD, and Young AW.** Neuropsychology of fear and loathing. *Nat Rev Neurosci* 2: 352–363, 2001.
- Collignon A, Maes F, Delaere D, Vandermeulen D, Suetens P, and Marchal G.** Automated multi-modality image registration based on information theory. In: *Proceedings of Information Processing in Medical Imaging Conference 1995*, edited by Bizais Y, Barillot C, and Di Paola R. Dordrecht, The Netherlands: Kluwer Academic Publishers, 1995, p. 263–274.
- Critchley HD, Daly E, Phillips M, Brammer M, Bullmore E, Williams S, Van Amelsvoort T, Robertson D, David A, and Murphy D.** Explicit and implicit neural mechanisms for processing of social information from facial expressions: a functional magnetic resonance imaging study. *Hum Brain Mapp* 9: 93–105, 2000.
- Critchley HD, Melmed RN, Featherstone E, Mathias CJ, and Dolan RJ.** Volitional control of autonomic arousal: a functional magnetic resonance study. *Neuroimage* 16: 909–919, 2002.
- Damasio AR, Tranel D, and Damasio H.** Face agnosia and the neural substrates of memory. *Annu Rev Neurosci* 13: 89–109, 1990.
- Desimone R.** Neural mechanisms for visual memory and their role in attention. *Proc Natl Acad Sci USA* 93: 13494–13499, 1996.
- Dolan RJ.** Emotion, cognition, and behavior. *Science* 298: 1191–1194, 2002.
- Dolan RJ, Fletcher P, Morris J, Kapur N, Deakin JF, and Frith CD.** Neural activation during covert processing of positive emotional facial expressions. *Neuroimage* 4: 194–200, 1996.
- Eger E, Schyns PG, and Kleinschmidt A.** Scale invariant adaptation in fusiform face-responsive regions. *Neuroimage* 22: 232–242, 2004.
- Eifuku S, De Souza WC, Tamura R, Nishijo H, and Ono T.** Neuronal correlates of face identification in the monkey anterior temporal cortical areas. *J Neurophysiol* 91: 358–371, 2004.
- Epstein R, Graham KS, and Downing PE.** Viewpoint-specific scene representations in human parahippocampal cortex. *Neuron* 37: 865–876, 2003.
- Friston K, Ashburner J, Frith CD, Poline J-B, Heather JD, and Frackowiak RSJ.** Spatial registration and normalization of images. *Hum Brain Mapp* 2: 165–189, 1995a.
- Friston K, Holmes AP, Worsley K, Poline J-B, Frith C, and Frackowiak RSJ.** Statistical parametric maps in functional imaging: a general linear approach. *Hum Brain Mapp* 2: 189–210, 1995b.
- Ganel T and Goshen-Gottstein Y.** Effects of familiarity on the perceptual integrity of the identity and expression of faces: the parallel-route hypothesis revisited. *J Exp Psychol Hum Percept Perform* 30: 583–597, 2004.
- Gauthier I, Tarr MJ, Moylan J, Skudlarski P, Gore JC, and Anderson AW.** The fusiform “face area” is part of a network that processes faces at the individual level. *J Cogn Neurosci* 12: 495–504, 2000.
- George N, Dolan RJ, Fink GR, Baylis GC, Russell C, and Driver J.** Contrast polarity and face recognition in the human fusiform gyrus. *Nat Neurosci* 2: 574–580, 1999.
- Grill-Spector K and Malach R.** fMR-adaptation: a tool for studying the functional properties of human cortical neurons. *Acta Psychol (Amst)* 107: 293–321, 2001.
- Hasselmo ME, Rolls ET, and Baylis GC.** The role of expression and identity in the face-selective responses of neurons in the temporal visual cortex of the monkey. *Behav Brain Res* 32: 203–218, 1989.
- Haxby JV, Hoffman EA, and Gobbini MI.** The distributed human neural system for face perception. *Trends Cogn Sci* 4: 223–233, 2000.
- Henson RNA.** Neuroimaging studies of priming. *Prog Neurobiol* 70: 53–81, 2003.
- Henson RNA, Goshen-Gottstein Y, Ganel T, Otten LJ, Quayle A, and Rugg MD.** Electrophysiological and haemodynamic correlates of face perception, recognition and priming. *Cereb Cortex* 13: 793–805, 2003.
- Henson RNA and Rugg MD.** Neural response suppression, haemodynamic repetition effects, and behavioural priming. *Neuropsychologia* 41: 263–270, 2003.
- Henson RNA, Shallice T, and Dolan R.** Neuroimaging evidence for dissociable forms of repetition priming. *Science* 287: 1269–1272, 2000.
- Heywood CA and Cowey A.** The role of the ‘face-cell’ area in the discrimination and recognition of faces by monkeys. *Philos Trans R Soc Lond B Biol Sci* 335: 31–37, 1992.
- Hoffman EA and Haxby JV.** Distinct representations of eye gaze and identity in the distributed human neural system for face perception. *Nat Neurosci* 3: 80–84, 2000.
- Iidaka T, Omori M, Murata T, Kosaka H, Yonekura Y, Okada T, and Sadato N.** Neural interaction of the amygdala with the prefrontal and temporal cortices in the processing of facial expressions as revealed by fMRI. *J Cogn Neurosci* 13: 1035–1047, 2001.
- Kanwisher N, McDermott J, and Chun MM.** The fusiform face area: a module in human extrastriate cortex specialized for face perception. *J Neurosci* 17: 4302–4311, 1997.
- Kourtzi Z and Kanwisher N.** Representation of perceived object shape by the human lateral occipital complex. *Science* 293: 1506–1509, 2001.
- Logothetis NK, Pauls J, Augath M, Trinath T, and Oeltermann A.** Neurophysiological investigation of the basis of the fMRI signal. *Nature* 412: 150–157, 2001.
- Lundqvist D and Litton JE.** The Averaged Karolinska Directed Emotional Faces—AKDEF, 1998.
- Martin A and Weisberg J.** Neural foundations for understanding social and mechanical concepts. *Cognit Neurosci* 20: 575–587, 2003.
- McCarthy G, Puce A, Belger A, and Allison T.** Electrophysiological studies of human face perception. II: Response properties of face-specific potentials generated in occipitotemporal cortex. *Cereb Cortex* 9: 431–444, 1999.
- Morris JS, Friston KJ, Buchel C, Frith CD, Young AW, Calder AJ, and Dolan RJ.** A neuromodulatory role for the human amygdala in processing emotional facial expressions. *Brain* 121:47–57, 1998.
- Morris JS, Frith CD, Perrett DI, Rowland D, Young AW, Calder AJ, and Dolan RJ.** A differential neural response in the human amygdala to fearful and happy facial expressions. *Nature* 383: 812–815, 1996.
- Naccache L and Dehaene S.** The priming method: imaging unconscious repetition priming reveals an abstract representation of number in the parietal lobes. *Cereb Cortex* 11: 966–974, 2001.
- Narumoto J, Okada T, Sadato N, Fukui K, and Yonekura Y.** Attention to emotion modulates fMRI activity in human right superior temporal sulcus. *Brain Res Cogn Brain Res* 12: 225–231, 2001.
- Ojemann JG, Ojemann GA, and Lettich E.** Neuronal activity related to faces and matching in human right nondominant temporal cortex. *Brain* 115: 1–13, 1992.
- Ono T and Nishijo H.** Neurophysiological basis of emotion in primates: neuronal responses in the monkey amygdala and anterior cingulate cortex. In: *The New Cognitive Neurosciences*, edited by Gazzaniga MS. Cambridge, MA: MIT Press, 2000, p. 1099–1114.
- Perrett DI, Oram MW, Harries MH, Bevan R, Hietanen JK, Benson PJ, and Thomas S.** Viewer-centred and object-centred coding of heads in the macaque temporal cortex. *Exp Brain Res* 86: 159–173, 1991.

- Perrett DI, Smith PA, Potter DD, Mistlin AJ, Head AS, Milner AD, and Jeeves MA.** Visual cells in the temporal cortex sensitive to face view and gaze direction. *Proc R Soc Lond B Biol Sci* 223: 293–317, 1985.
- Pessoa L, McKenna M, Gutierrez E, and Ungerleider LG.** Neural processing of emotional faces requires attention. *Proc Natl Acad Sci USA* 99: 11458–11463, 2002.
- Puce A, Allison T, Gore JC, and McCarthy G.** Face-sensitive regions in human extrastriate cortex studied by functional MRI. *J Neurophysiol* 74: 1192–1199, 1995.
- Rossion B, Caldara R, Seghier M, Schuller AM, Lazeyras F, and Mayer E.** A network of occipito-temporal face-sensitive areas besides the right middle fusiform gyrus is necessary for normal face processing. *Brain* 126: 2381–2395, 2003.
- Rotshtein P, Malach R, Hadar U, Graif M, and Hendler T.** Feeling or features: different sensitivity to emotion in high-order visual cortex and amygdala. *Neuron* 32: 747–757, 2001.
- Saxe R and Kanwisher N.** People thinking about thinking people. The role of the temporo-parietal junction in “theory of mind.” *Neuroimage* 19: 1835–1842, 2003.
- Schweinberger SR, Burton AM, and Kelly SW.** Asymmetric dependencies in perceiving identity and emotion: experiments with morphed faces. *Percept Psychophys* 61: 1102–1115, 1999.
- Schweinberger SR and Soukup GR.** Asymmetric relationships among perceptions of facial identity, emotion, and facial speech. *J Exp Psychol Hum Percept Perform* 24: 1748–1765, 1998.
- Sergent J, Ohta S, and MacDonald B.** Functional neuroanatomy of face and object processing. A positron emission tomography study. *Brain* 115: 15–36, 1992.
- Sergent J, Ohta S, MacDonald B, and Zuck E.** Segregated processing of facial identity and emotion in the human brain: a PET study. *Vis Cogn* 1: 349–369, 1994.
- Surguladze SA, Brammer MJ, Young AW, Andrew C, Travis MJ, Williams SC, and Phillips ML.** A preferential increase in the extrastriate response to signals of danger. *Neuroimage* 19: 1317–1328, 2003.
- Tiberghien G, Baudouin JY, Guillaume F, and Montoute T.** Should the temporal cortex be chopped in two? *Cortex* 39: 121–126, 2003.
- Tranel D, Damasio H, and Damasio AR.** A neural basis for the retrieval of conceptual knowledge. *Neuropsychologia* 35: 1319–1327, 1997.
- Vogels R, Biederman I, Bar M, and Lorincz A.** Inferior temporal neurons show greater sensitivity to nonaccidental than to metric shape differences. *J Cogn Neurosci* 13: 444–453, 2001.
- Vuilleumier P, Armony JL, Driver J, and Dolan RJ.** Effects of attention and emotion on face processing in the human brain: an event-related fMRI study. *Neuron* 30: 829–841, 2001.
- Vuilleumier P, Armony JL, Driver J, and Dolan RJ.** Distinct spatial frequency sensitivities for processing faces and emotional expressions. *Nat Neurosci* 6: 624–631, 2003a.
- Vuilleumier P, Mohr C, Valenza N, Wetzel C, and Landis T.** Hyperfamiliarity for unknown faces after left lateral temporo-occipital venous infarction: a double dissociation with prosopagnosia. *Brain* 126: 889–907, 2003b.
- Wada Y and Yamamoto T.** Selective impairment of facial recognition due to a haematoma restricted to the right fusiform and lateral occipital region. *J Neurol Neurosurg Psychiatry* 71: 254–257, 2001.
- Whalen PJ, Rauch SL, Etcoff NL, McInerney SC, Lee MB, and Jenike MA.** Masked presentations of emotional facial expressions modulate amygdala activity without explicit knowledge. *J Neurosci* 18: 411–418, 1998.
- Winston JS, O’Doherty J, and Dolan RJ.** Common and distinct neural responses during direct and incidental processing of multiple facial emotions. *Neuroimage* 20: 84–97, 2003a.
- Winston JS, Vuilleumier P, and Dolan RJ.** Effects of low-spatial frequency components of fearful faces on fusiform cortex activity. *Curr Biol* 13: 1824–1829, 2003b.
- Wojciulik E, Kanwisher N, and Driver J.** Covert visual attention modulates face-specific activity in the human fusiform gyrus: fMRI study. *J Neurophysiol* 79: 1574–1578, 1998.
- Worsley K, Marrett S, Neelin P, Vandal AC, Friston KJ, and Evans AC.** A unified statistical approach for determining significant signals in images of cerebral activation. *Hum Brain Mapp* 4: 58–73, 1996.
- Young AW, Newcombe F, de Haan EH, Small M, and Hay DC.** Face perception after brain injury. Selective impairments affecting identity and expression. *Brain* 116:941–959, 1993.