



Evelyn Balteau¹, Tobias Leutritz², Antoine Lutti³, Martina F Callaghan⁴, Bogdan Draganski^{2,3}, Christophe Phillips¹, Enrico Reimer², Lars Ruthotto⁵, Maryam Seif⁶, Nikolaus Weiskopf², Gabriel Ziegler⁷, Siawoosh Mohammadi⁸ and Karsten Tabelow⁹

¹Cyclotron Research Centre, University of Liege, Belgium, ²Max Planck Institute for Human Cognitive and Brain Sciences, Leipzig, Germany, ³LREN, DNC - CHUV, University Lausanne, Switzerland, ⁴University College London, United Kingdom, ⁵Emory University, Atlanta, United States, ⁶University of Zurich, Switzerland, ⁷Otto-von-Guericke-University Magdeburg, Germany, ⁸Medical Center Hamburg-Eppendorf, Germany, ⁹Weierstrass Institute for Applied Analysis and Stochastics, Berlin, Germany.

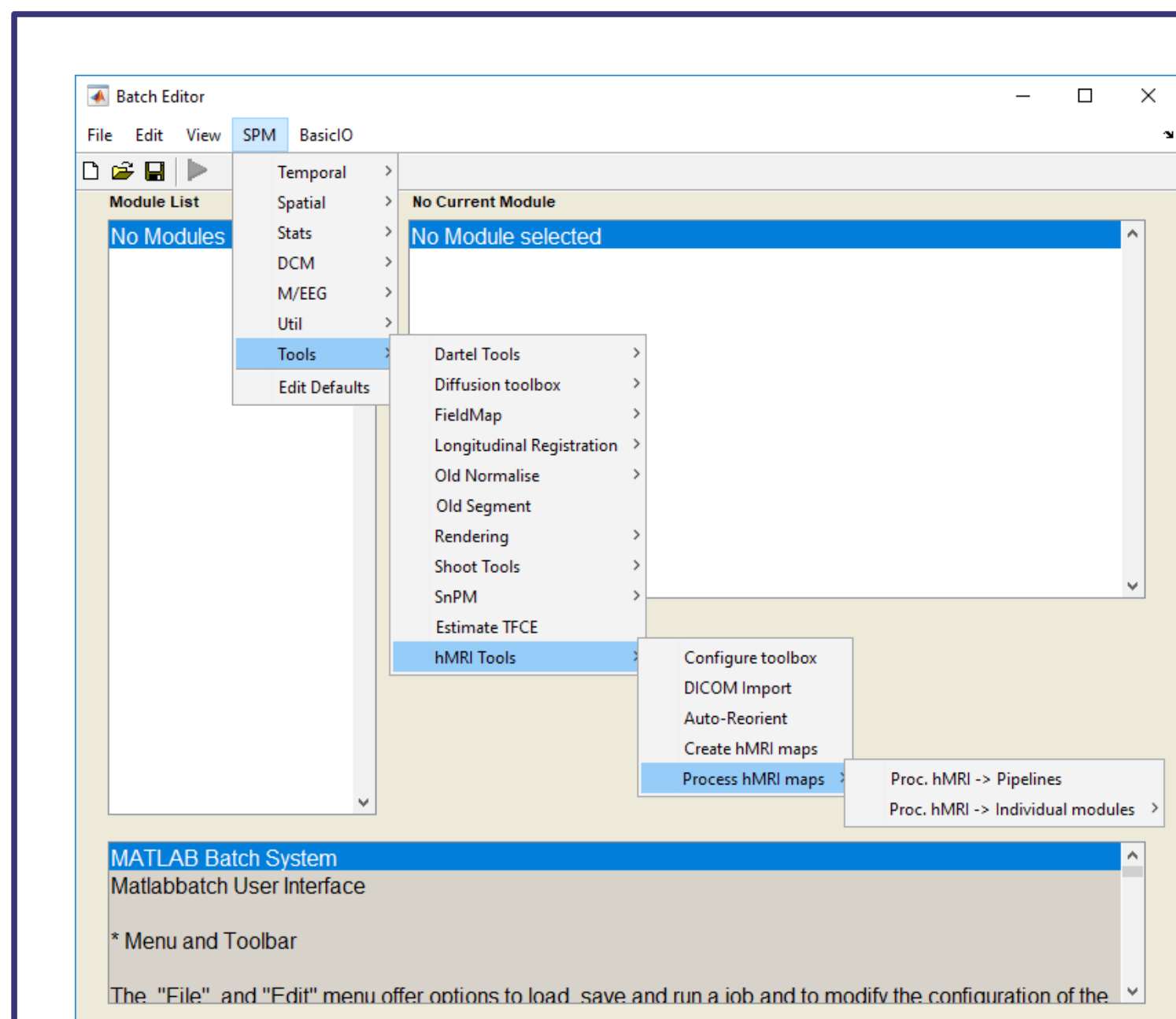
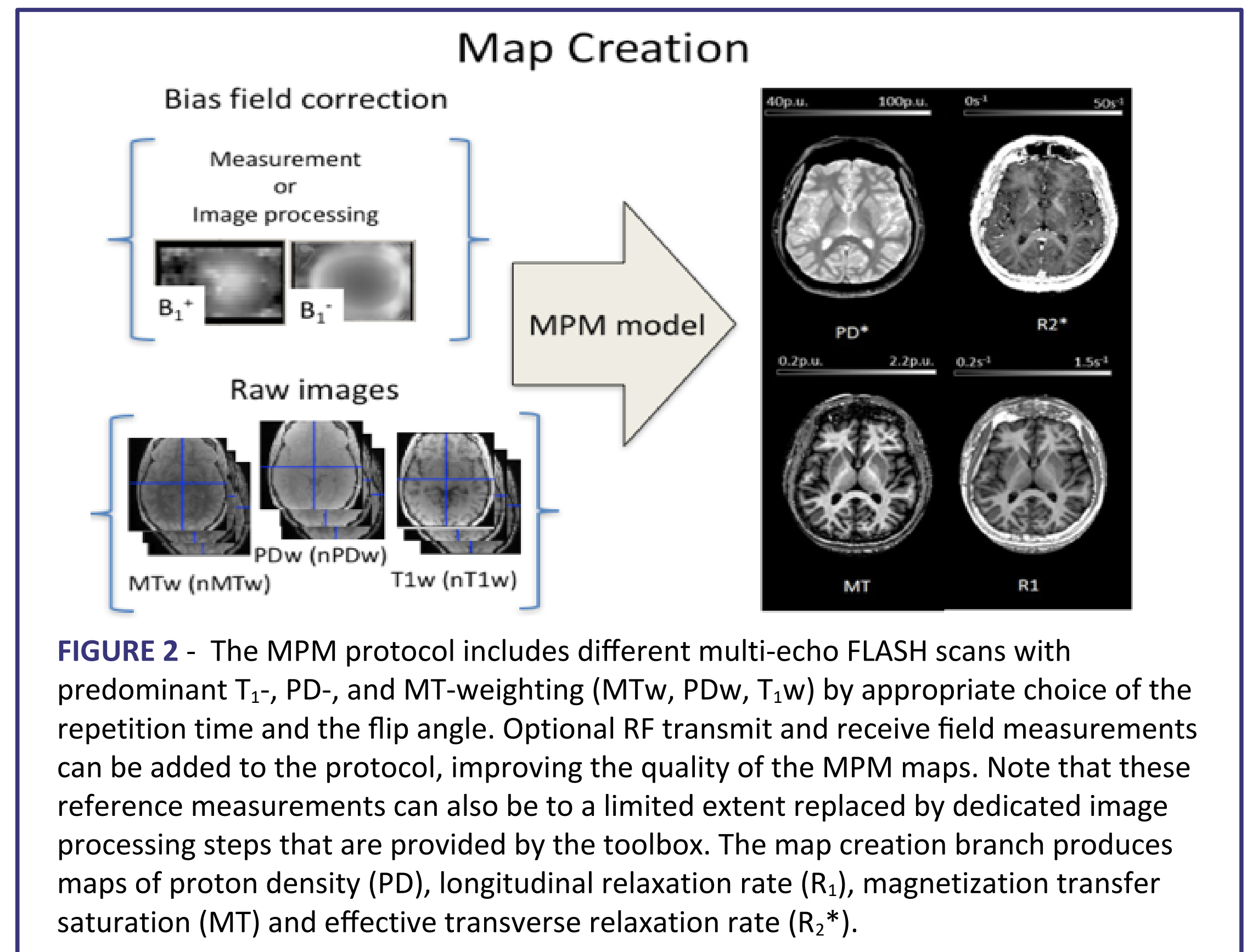


FIGURE 1 - After installation, the hMRI toolbox can be started from the SPM Batch Editor. Five choices include the configuration of the toolbox, DICOM to NIfTI import, a reorientation tool, the hMRI map creation and the spatial processing of the hMRI maps.

HIGHLIGHTS

Quantitative magnetic resonance imaging (qMRI) finds increasing application in neuroscience and clinical research due to its greater specificity and its sensitivity to microstructural properties of brain tissue - myelin, iron and water concentration. We introduce the **hMRI toolbox**, an easy-to-use open-source tool for handling and processing quantitative MRI data. This toolbox is embedded in the SPM framework, profiting from the high accuracy spatial registration in common space and the variety of available statistical analyses. It allows the estimation of high-quality qMRI maps (longitudinal and transverse relaxation rates R_1 and R_2^* , proton density PD and magnetization transfer MT), followed by spatial registration in common space for statistical analysis, leading to improved volumetric delineation of subcortical brain as well as calculation of standard and novel MRI biomarkers of tissue microstructure.

The **hMRI toolbox** can be downloaded from <http://hmri.info> (git repository). The reference documentation is available as a WIKI on the git repository, including installation instructions, example dataset, tutorial and detailed description of the functionalities implemented.



ORGANIZATION OF THE TOOLBOX

The toolbox has been developed and tested with MATLAB versions 8.0 (R2012b) to 9.3 (R2017b) and SPM12 versions r6906 and r7219. It is organized in five parts (**FIG.1**):

CONFIGURE TOOLBOX: A set of standard default processing parameters are provided. The configuration module allows the user to define site- or protocol-specific default parameters to be used across the following processing modules.

DICOM IMPORT: A tool to convert DICOM data into NIfTI files, storing the whole DICOM header as JSON-encoded metadata. By enabling the storage of data acquisition and processing parameters alongside the brain imaging data sets, the hMRI toolbox follows the BIDS recommendations¹.

AUTO-REORIENT: A simple tool for rigid-body reorientation of all images to the MNI space prior to data processing, in order to ensure the stability of spatial processing steps (mainly segmentation²).

CREATE hMRI MAPS (FIG.2): Computes quantitative estimates of R_2^* , R_1 , PD and MT from unprocessed multi-echo T_1 -, PD- and MT-weighted FLASH acquisitions (stored as NIfTI volumes)³⁻⁶. The Map creation module corrects the qMRI estimates for spatial receive and transmit field inhomogeneities based on additional reference data⁷⁻⁹ or using image processing methods^{5,10}. Note that there are different methods for PD calculation implemented in the toolbox. Refer to [Balteau et al. #2694](#) where these methods are introduced and compared.

PROCESS hMRI MAPS (FIG.3): This module provides dedicated tools and tissue probability maps^{11,12} for the spatial processing of the qMRI data based on the SPM spatial processing framework. In particular, spatial registration of the qMRI parameters in standardised space is implemented using the voxel-based quantification (VBQ) approach¹¹, taking a weighted sum of the qMRI estimates over the spatial extent of the smoothing kernel in native space, and incorporating the Jacobian determinant of the deformation into the weighting (FIG. 3). The weighting is carried out in a tissue-specific manner, producing sets of qMRI maps separately for each tissue class, while reducing partial volume effects on parameter estimates¹¹.

REFERENCES – 1. Gorgolewski et al. *Sci Data* 3, 160044 (2016). 2. Ashburner & Friston. *Neuroimage* 26, 839–851 (2005). 3. Helms et al. *MRM* 59, 667–672 (2008). 4. Helms et al. *MRM* 60, 1396–1407 (2008). 5. Weiskopf et al. *Front. Neurosci.* 7, 95 (2013). 6. Weiskopf et al. *Front. Neurosci.* 8, 278 (2014). 7. Lutti et al. *MRM* 64, 229–238 (2010). 8. Lutti et al. *PLoS ONE* 7, e32379 (2012). 9. Papp et al. *MRM* 76, 1478–1485 (2016). 10. Weiskopf et al. *Neuroimage* 54, 2116–2124 (2011). 11. Draganski et al. *Neuroimage* 55, 1423–1434 (2011). 12. Lorio et al. *Neuroimage* 130, 157–166 (2016). 13. Freund et al. *Lancet Neurol* 12, 873–881 (2013). 14. Callaghan et al. *Neurobiology of Aging* 35, 1862–1872 (2014). 15. Lorio et al. *Neuroimage* 103, 280–289 (2014). 16. Lutti et al. *Neuroimage* 93, Part 2, 176–188 (2014). 17. Callaghan et al. *Front. Neurosci.* 9, 97 (2015). 18. Trampel et al. *Neuroimage* (2017). doi:10.1016/j.neuroimage.2017.09.037. 19. Helms et al. *Neuroimage* 47, 194–198 (2009). 20. Callaghan et al. *NMR Biomed* 29, 1729–1738 (2016). 21. Lambert et al. *Neuroimage Clin* 2, 684–694 (2013). 22. Mohammadi et al. *Front. Neurosci.* 9, 441 (2015). 23. Ellerbrock & Mohammadi, *Hum. Brain Mapp.* doi:10.1002/hbm.23858. 24. Ashburner, *Neuroimage* 38, 95–113 (2007). 25. Mohammadi & Callaghan, in M. Cercignani, N. Dowell, P. Tofts (2nd edition). *Quantitative MRI of the Brain: Principles of Physical Measurement* (Taylor and Francis, in press).

ACKNOWLEDGEMENTS – EB received funding from the European Structural and Investment Fund / European Regional Development Fund & the Belgian Walloon Government, project BIOMED-HUB (programme 2014-2020). The research leading to these results has received funding from the European Research Council under the European Union's Seventh Framework Programme (FP7/2007-2013) / ERC grant agreement n° 616905, from the European Union's Horizon 2020 research and innovation programme under the grant agreement No 681094, and is supported by the Swiss State Secretariat for Education, Research and Innovation (SERI) under contract number 15.0137. SM received funding from the European Union's Horizon 2020 research and innovation programme under the Marie Skłodowska-Curie grant agreement No 658589. NW and SM received funding from the BMBF (01EW1711A and B) in the framework of ERA-NET NEURON. BD is supported by the Swiss National Science Foundation (NCCR Synapsy, project grant Nr 32003B_159780) and Foundation Synapsy. LREN is very grateful to the Roger De Spoelberch and Partridge Foundations for their generous financial support. MFC is supported by the MRC and Spinal Research Charity through the ERA-NET Neuron joint call (MR/R00050/1). The Wellcome Centre for Human Neuroimaging is supported by core funding from the Wellcome [203147/Z/16/Z]. CP is supported by the F.R.S.-FNRS, Belgium.

USAGE OF qMRI MAPS COMPUTED WITH THE hMRI TOOLBOX

The hMRI toolbox provides a time-efficient, robust and simple framework to use qMRI data in clinical and neuroscience research. Quantitative multiparameter maps (MPM) computed with the hMRI toolbox have been used for e.g. (a) the combined study of myelin and iron concentration in brain tissue^{13,14}, (b) the study of brain atrophy using improved delineation of tissue boundaries^{13,15} and (c) assessment of layer-specific microstructure¹⁶ acquiring high-resolution data (800 μ m in 25 min. @3T¹⁷, 400 μ m in 70 min. @7T¹⁸). Segmentation of subcortical areas benefits from the multiple, bias-free contrasts of the qMRI data computed by the hMRI toolbox^{19,20}, leading to improved sensitivity in subcortical regions²¹. The MPM framework is currently used in a multi-site clinical trial (NISC trial, [Seif et al. #1199](#)) including different vendors. This has been possible because the MPM acquisition relies mostly on multi-echo FLASH that is available on all modern scanner platforms. The hMRI toolbox also allows advanced biophysical modelling of MRI data, for improved inference of brain tissue change at the microscopic level.

