

Supporting Information

Effect of particulate stabilizer morphology on mechanical properties of liquid marbles

Saeid Azizian,^{1} Syuji Fujii,^{2,3*} Moe Kasahara,⁴ Hans-Jürgen Butt,⁵ and Michael Kappl^{5*}*

¹ Department of Physical Chemistry, Faculty of Chemistry, Bu-Ali Sina University, Hamedan
65167, Iran

² Department of Applied Chemistry, Faculty of Engineering, Osaka Institute of Technology, 5-
16-1 Omiya, Asahi-ku, Osaka, 535-8585, Japan

³ Nanomaterials Microdevices Research Center, Osaka Institute of Technology, 5-16-1, Omiya,
Asahi-ku, Osaka 535-8585, Japan

⁴ Division of Applied Chemistry, Graduate School of Engineering, Osaka Institute of
Technology, 5-16-1, Omiya, Asahi-ku, Osaka 535-8585, Japan

⁵ Max Planck Institute for Polymer Research, Ackermannweg 10, D-55128 Mainz, Germany

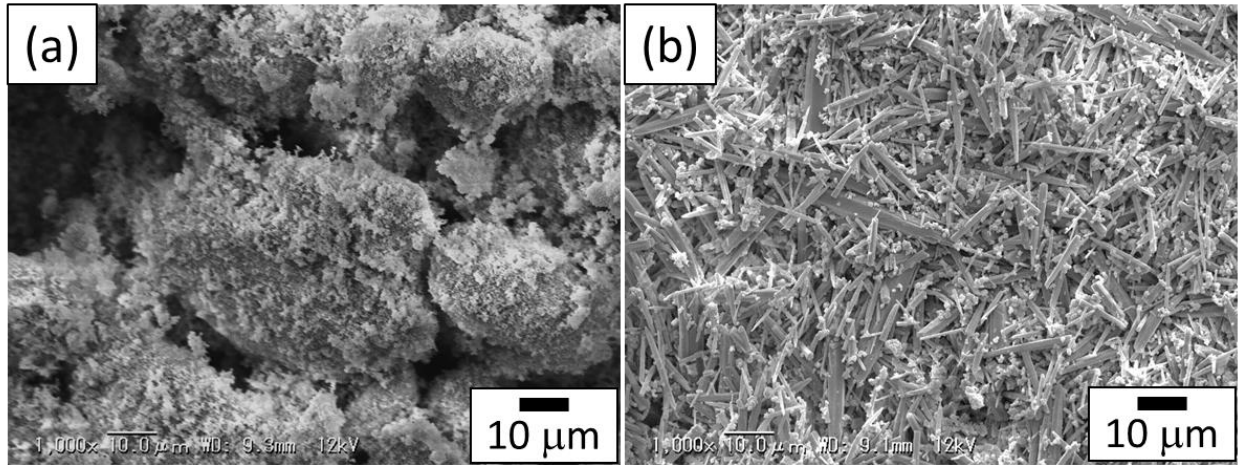


Figure S1. The SEM images of the prepared CaCO_3 samples with different morphologies, (a) spherical nanoparticles and (b) rod-shaped particles.

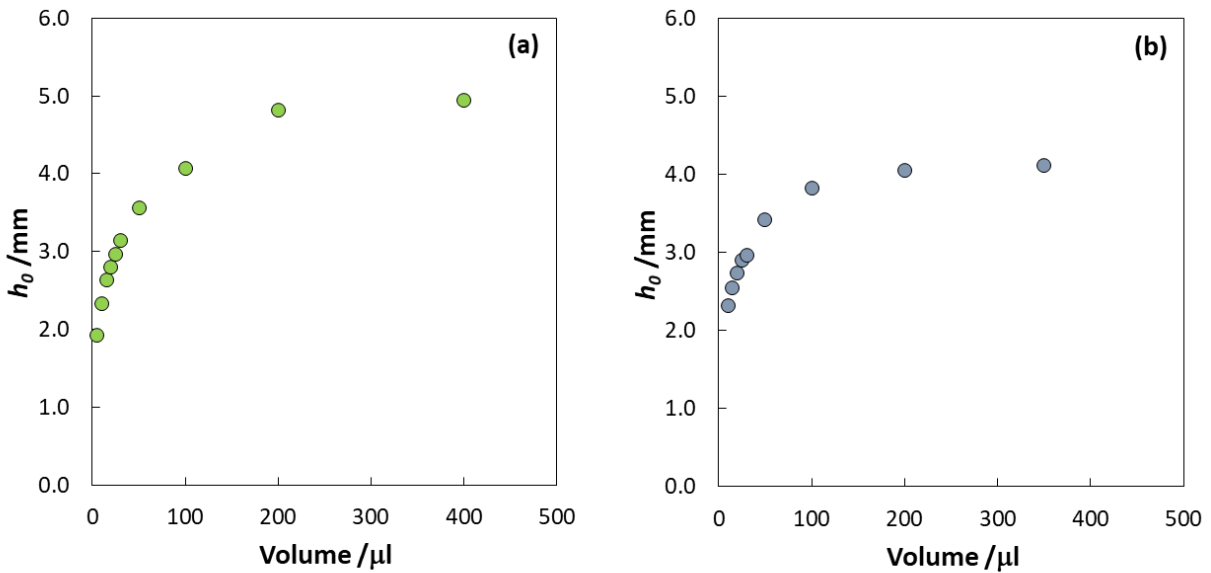


Figure S2. Height of liquid marble versus volume for (a) L1 and (b) L2.

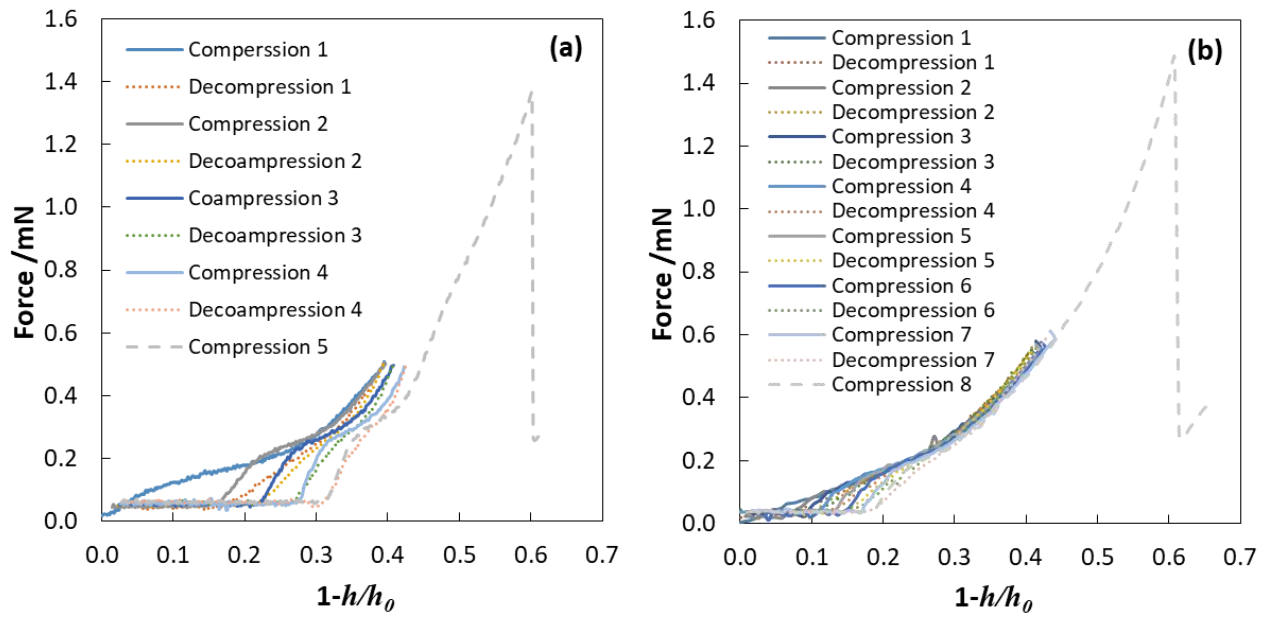


Figure S3. Compression-decompression force as a function of relative compression of liquid marble (L_2) for different cycles with the rate of (a) $9.6 \mu\text{m/s}$ and (b) $25 \mu\text{m/s}$.