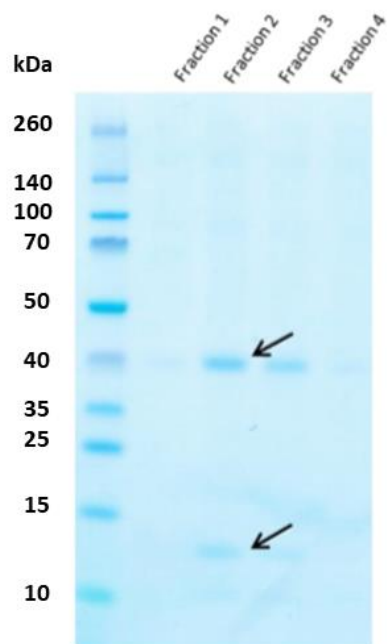


Supplementary figure 1: Analysis of sHLA-F fractions after affinity chromatography



SDS-PAGE of sHLA-F*01:01; all samples were diluted 1:2; *Spectra Multicolor Broad Range* was used as maker; arrows indicate the position of HLA-F hc/V5-His6 (~39 kDa) and β 2m (11,7 kDa).