

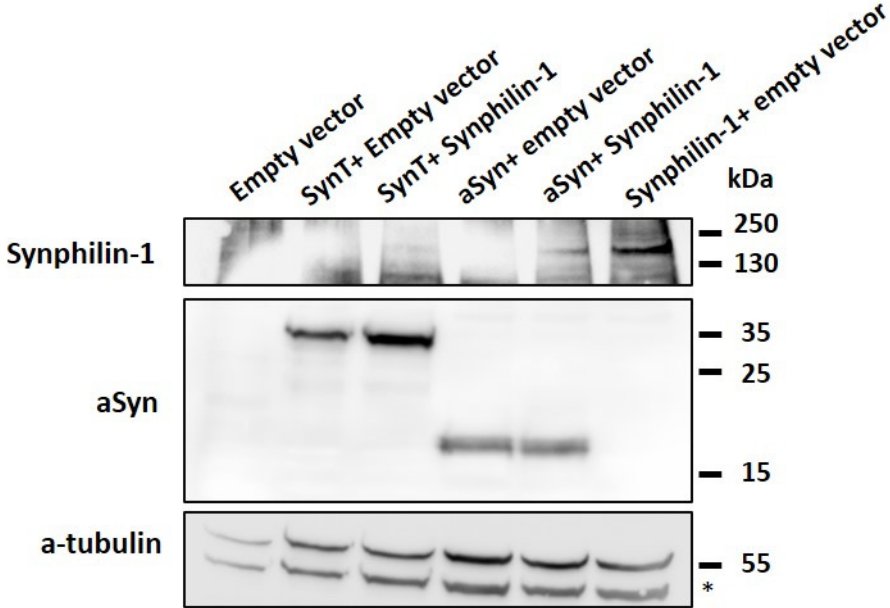
Molecular characterization of an aggregation-prone variant of alpha-synuclein used to model synucleinopathies

Caterina Masaracchia¹, Annekatrin H. König¹, Ariel A. Valiente-Gabioud², Pablo Peralta², Filippo Favretto³, Timo Strohäker⁴, Diana F. Lázaro¹, Markus Zweckstetter^{3,4,5}, Claudio O. Fernandez², Tiago F. Outeiro^{1,6,7}

Supplementary Figure S1. Expression levels of constructs. H4 cells were transfected with the different constructs and expression levels of Synphilin-1, aSyn and α -tubulin were assessed via immunoblot analyses. An unspecific band was observed (shown with *).

Supplementary Figure S2. Biophysical characterization of SynT. Quality of purified recombinant acetylated aSyn and SynT was checked in (A) coomassie-stained SDS-page (1 μ g protein was loaded) and (B) immunoblot, probed for aSyn specific antibody (0.05 μ g protein was loaded.) (C) Size Exclusion Chromatography profiles of aSyn (blue) and SynT (red).

Supplementary Figure S1.



Supplementary Figure S2.

