








<https://doi.org/10.1038/s41467-020-18561-y>

OPEN

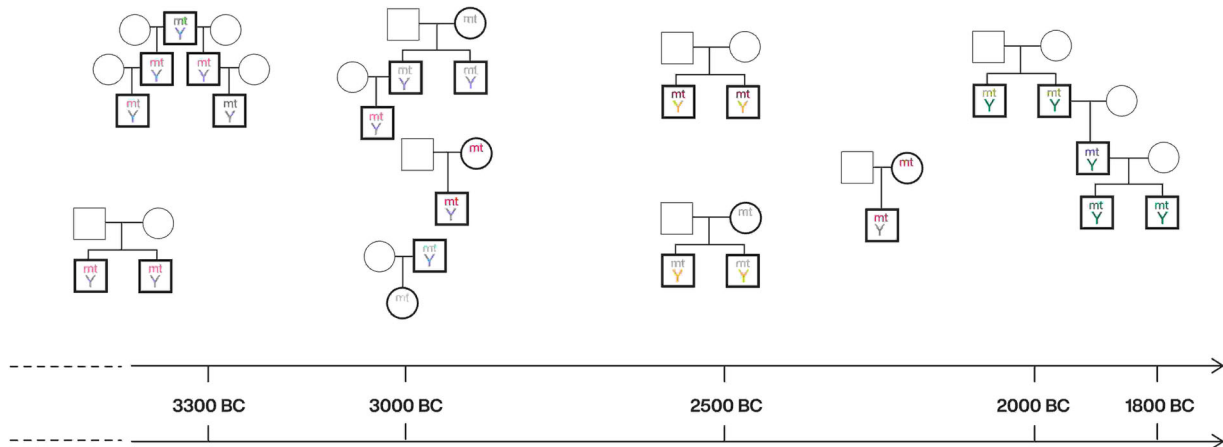
Author Correction: Ancient genomes reveal social and genetic structure of Late Neolithic Switzerland

Anja Furtwängler, A. B. Rohrlach , Thiseas C. Lamnidis, Luka Papac, Gunnar U. Neumann, Inga Siebke, Ella Reiter, Noah Steuri, Jürgen Hald, Anthony Denaire, Bernadette Schnitzler, Joachim Wahl, Marianne Ramstein, Verena J. Schuenemann, Philipp W. Stockhammer , Albert Hafner , Sandra Lösch , Wolfgang Haak , Stephan Schiffels  & Johannes Krause 

Correction to: *Nature Communications* <https://doi.org/10.1038/s41467-020-15560-x>, published online 20 April 2020.

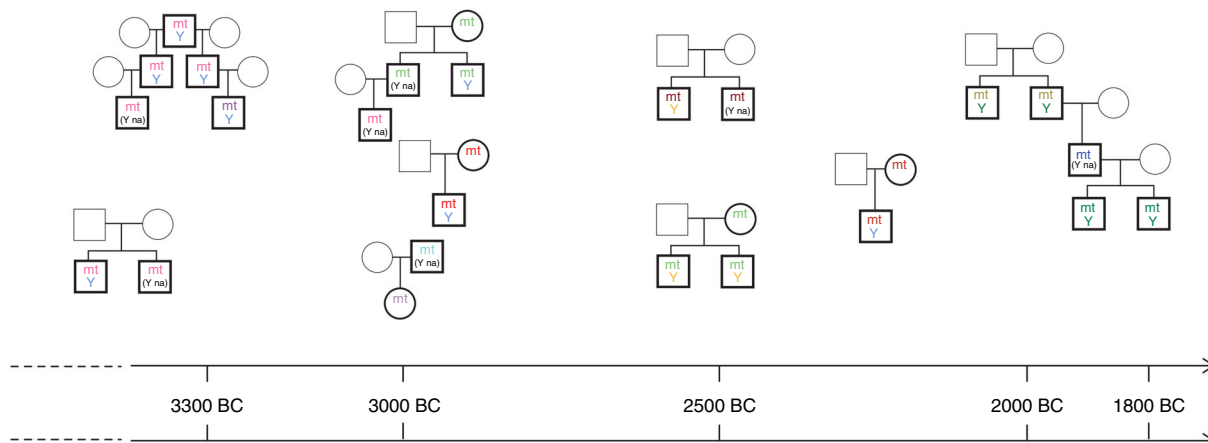
The original version of this article contained several errors, listed below, resulting from an update to the Y chromosomal haplogroup assignments during the final revisions. These do not affect the results or conclusions of the work.

The original version of this article contained an error in Fig. 4, several labels of ‘Y na’ have now been replaced by ‘Y’ in the corrected figure, the colour of ‘mt’ has also been changed in the corrected figure. The correct version of Fig. 4 is below:



Site	Oberbipp	Aesch	Spreitenbach	Rapperswil	Singen
Number of individuals with relatives	7 (19)	8 (25)	5 (12)	2 (2)	5 (15)
Burial type	Megalithic Dolmen	Megalithic Dolmen	Collective burial	Stone cist	Crouched burials
Region	Central Switzerland	Northwest Switzerland	Central Switzerland	Central Switzerland	South Germany
Range C14 dates related individuals	3337-2908 BC	3078-2877 BC	2860-2050 BC	2463-2274 BC	2135-1892 BC

which replaces the previous incorrect version:



Site	Oberbipp	Aesch	Spreitenbach	Rapperswill	Singen
Number of individuals with relatives	7(19)	8(25)	5(12)	2(2)	5(15)
Burial type	Megalithic Dolmen	Megalithic Dolmen	Collective burial	Stone cist	Crouched burials
Region	Central Switzerland	Northwest Switzerland	Central Switzerland	Central Switzerland	South Germany
Range C14 dates related individuals	3337-2908 BC	3078-2877 BC	2860-2050 BC	2463-2274 BC	2135-1892 BC

This has been corrected in both the PDF and HTML versions of the article.

The original version of the Supplementary Information associated with this article contained an error in Supplementary Note 4, line 9, which incorrectly read ‘In the younger site of Spreitenbach associated with the Corded Ware complex only haplogroups of the clades I2c and I2a are present’. The correct version states ‘In the younger site of Spreitenbach associated with the Corded Ware complex only haplogroups of the clade I2a is present’. It also contained an error in Supplementary Note 4, line 11, which incorrectly read ‘All samples in the dataset younger than 2200 BC all individuals carry R1b, beside MX265 from Singen, which belongs to R1a’. The correct version states ‘After 2200 BC all individuals carry R1b, beside MX265 from Singen, which belongs to R1a’.


The original version of the Supplementary Table 5 in the Supplementary Information had several errors in column 16, as well as an error in column 9 (line 15). A line has also been added on line 31. The HTML has been updated to include a corrected version of the Supplementary Information; the original incorrect version can be found as Supplementary Information associated with this Correction.

The original version of the Supplementary Data 1 file contained several errors in columns G, H and X. The HTML has been updated to include a corrected version of Supplementary Data 1; the original incorrect version of Supplementary Data 1 can be found associated with this Correction.

Published online: 16 September 2020

Additional information

Supplementary information is available for this paper at <https://doi.org/10.1038/s41467-020-18561-y>.

 **Open Access** This article is licensed under a Creative Commons Attribution 4.0 International License, which permits use, sharing, adaptation, distribution and reproduction in any medium or format, as long as you give appropriate credit to the original author(s) and the source, provide a link to the Creative Commons license, and indicate if changes were made. The images or other third party material in this article are included in the article’s Creative Commons license, unless indicated otherwise in a credit line to the material. If material is not included in the article’s Creative Commons license and your intended use is not permitted by statutory regulation or exceeds the permitted use, you will need to obtain permission directly from the copyright holder. To view a copy of this license, visit <http://creativecommons.org/licenses/by/4.0/>.

© The Author(s) 2020