



AMS

American Meteorological Society

Supplemental Material

Journal of Hydrometeorology

Robustness of Process-Based versus Data-Driven Modeling in Changing Climatic Conditions

<https://doi.org/10.1175/JHM-D-20-0072.1>

[© Copyright 2020 American Meteorological Society](#)

Permission to use figures, tables, and brief excerpts from this work in scientific and educational works is hereby granted provided that the source is acknowledged. Any use of material in this work that is determined to be “fair use” under Section 107 of the U.S. Copyright Act or that satisfies the conditions specified in Section 108 of the U.S. Copyright Act (17 USC §108) does not require the AMS’s permission. Republication, systematic reproduction, posting in electronic form, such as on a website or in a searchable database, or other uses of this material, except as exempted by the above statement, requires written permission or a license from the AMS. All AMS journals and monograph publications are registered with the Copyright Clearance Center (<http://www.copyright.com>). Questions about permission to use materials for which AMS holds the copyright can also be directed to permissions@ametsoc.org. Additional details are provided in the AMS Copyright Policy statement, available on the AMS website (<http://www.ametsoc.org/CopyrightInformation>).

Robustness of process-based versus data-driven modelling in changing climatic conditions

Sungmin O¹, Emanuel Dutra², and Rene Orth¹

¹Department for Biogeochemical Integration, Max Planck Institute for Biogeochemistry, Jena, Germany (sungmino@bgc-jena.mpg.de)

²Instituto Dom Luiz (IDL), Faculty of Sciences, University of Lisbon, Portugal

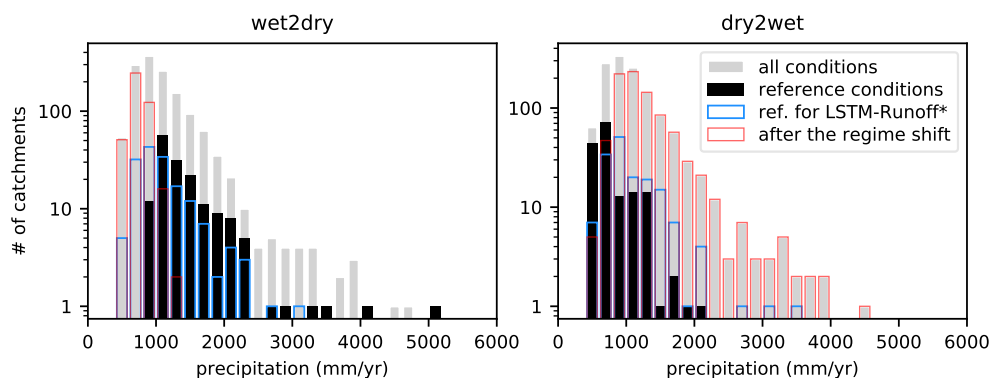


Figure S1. Distribution of annual precipitation used for model training and evaluation for wet2day (left) and dry2wet (right). Grey bars are same with those in Fig. 2 in the main text, but in absolute terms. Black bars show the reference wettest/driest years from each of the 161 catchments, while blue bars indicate randomly selected reference years for training LSTM-Runoff*. Red bars show evaluation years after the climate regime shift.

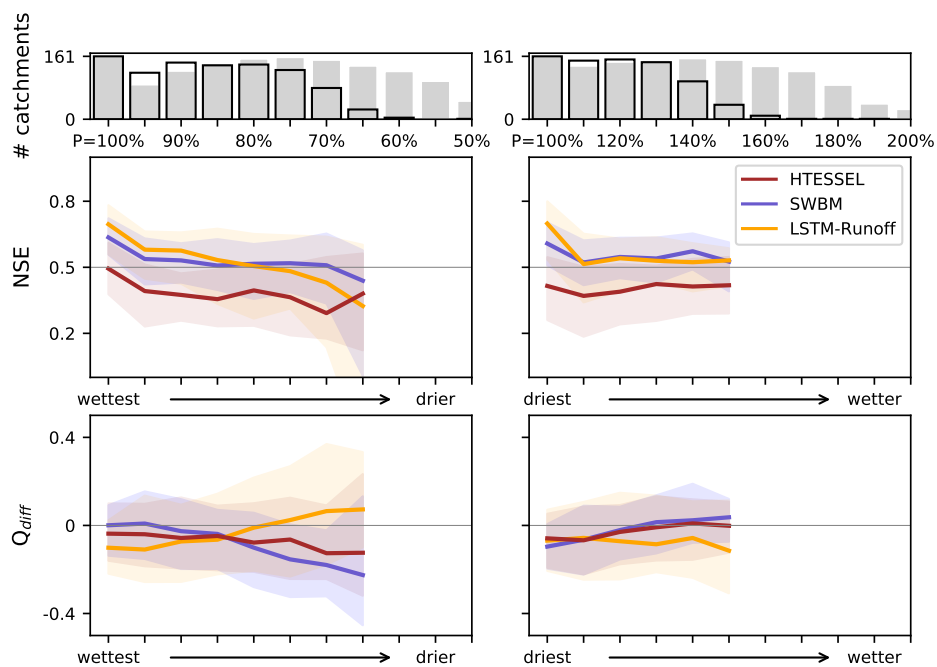


Figure S2. Major results of Fig. 2 in the main text are revisited using two-years sub-periods for model calibration and evaluation. Open bars in the top panel show the number of catchments that contribute two-years time series for each precipitation bin.

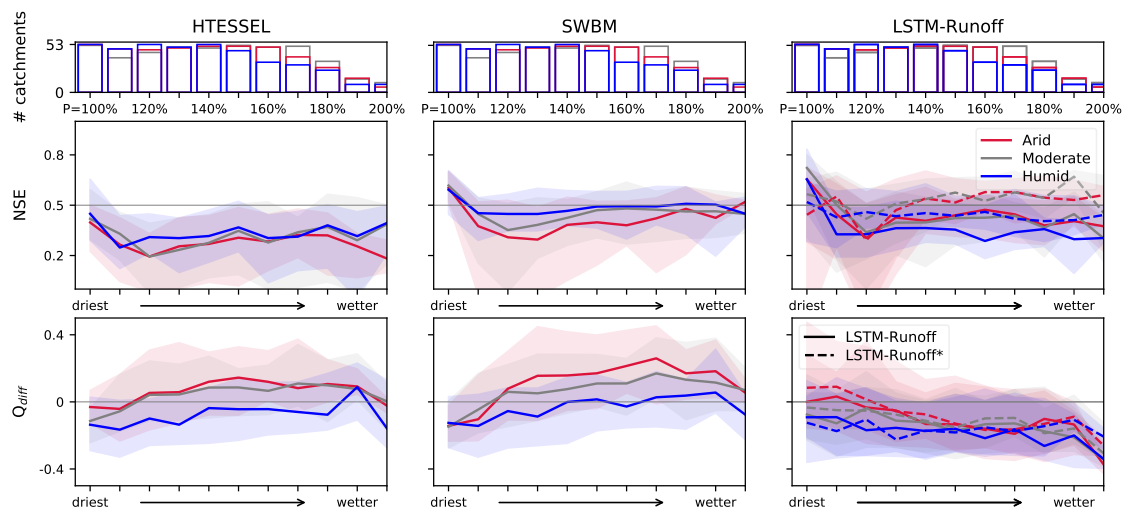


Figure S3. Same as Fig. 3 in the main text, but for dry2wet.

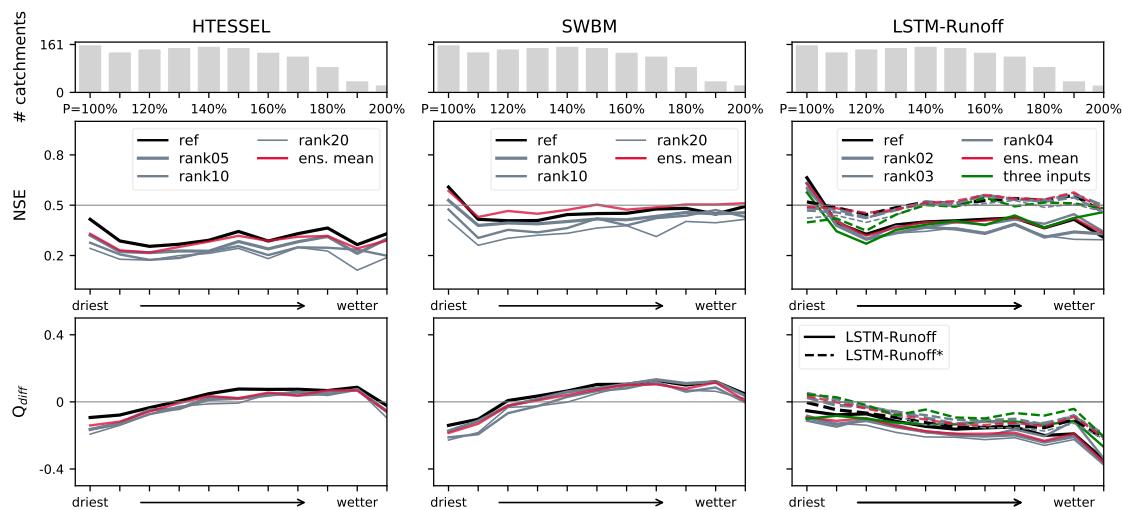


Figure S4. Same as Fig. 5 in the main text, but for dry2wet.