



*Supplement of*

**Identifying the sources of uncertainty in climate model simulations of solar radiation modification with the G6sulfur and G6solar Geoengineering Model Intercomparison Project (GeoMIP) simulations**

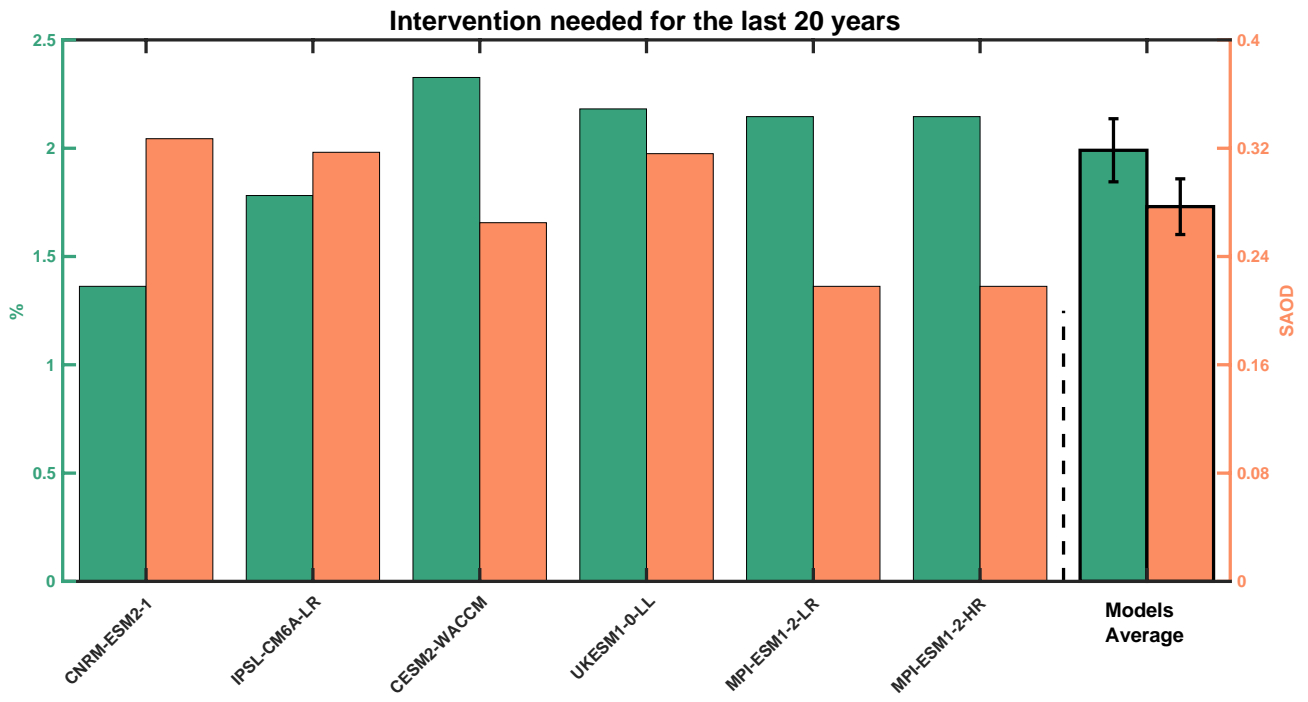
**Daniele Visioni et al.**

*Correspondence to:* Daniele Visioni (dv224@cornell.edu)

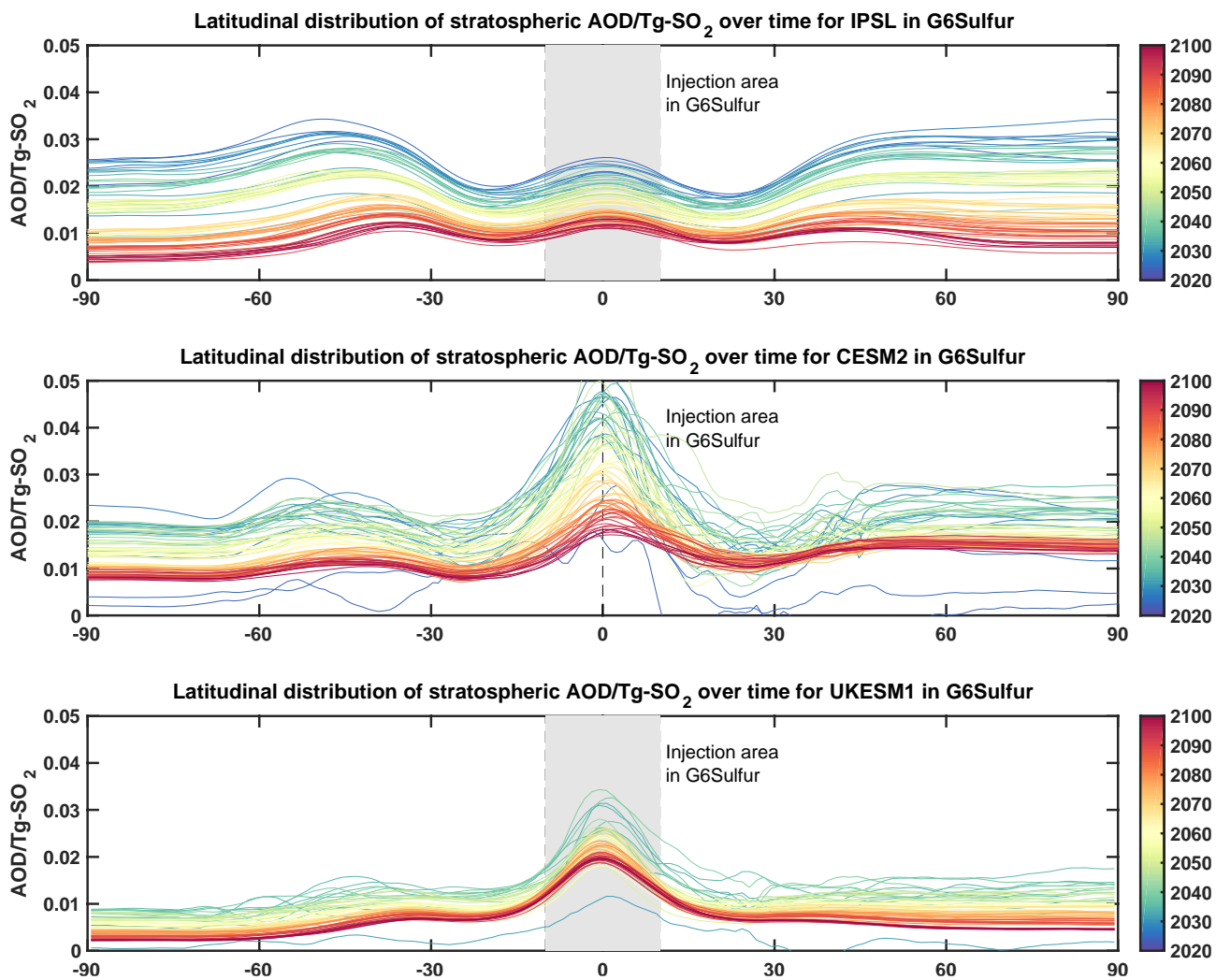
The copyright of individual parts of the supplement might differ from the article licence.

Model	Ocean biogeochemistry	Land model	Atmospheric chemistry	Stratospheric Aerosol approach
<b>CESM2-WACCM</b>	Interactive (MARBL-BEC)	Interactive (CLM5)	Stratospheric-tropospheric chemistry	Modal (4 modes) MAM4 coupled to chemistry
<b>CNRM-ESM2-1</b>	Interactive (PISCESv2-gasf)	Interactive (ISBA-CTrip)	Interactive stratospheric. Non-interactive tropospheric	Prescribed
<b>IPSL</b>	Interactive (NEMO-PISCES)	Interactive (ORCHIDEE)	Stratospheric-tropospheric chemistry	Sectional
<b>MPI-ESM (both)</b>	Interactive (HAMMOCS)	Interactive (JSBACH3.2)	Non-interactive	Prescribed
<b>UKESM1-0-LL</b>	Interactive (MEDUSA)	Interactive (JULES)	Stratospheric-tropospheric chemistry (UKCA)	Modal (4 modes) coupled to chemistry

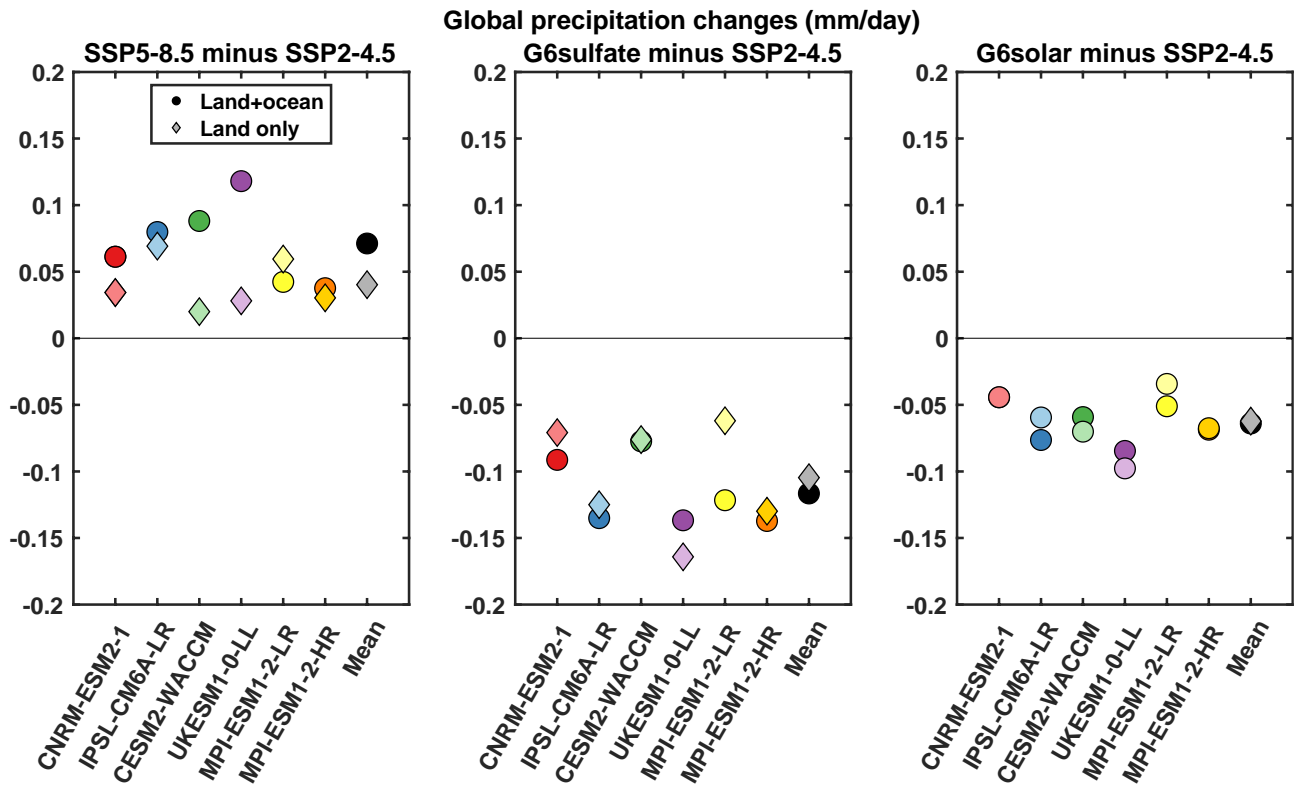
**Table S1.** Models components for the models participating in the G6 experiments. Further information can be found at the references in Table 1.



**Fig. S1** As in Fig. 2f, but not normalized by the warming in the last 20 years.



**Fig. S2** Latitudinal distribution of yearly-averaged AOD normalized by amount of SO<sub>2</sub> injected in that year. The color scale indicate the year of analyses.



**Fig.S3** Global mean values for precipitation changes in the period 2081-2100.