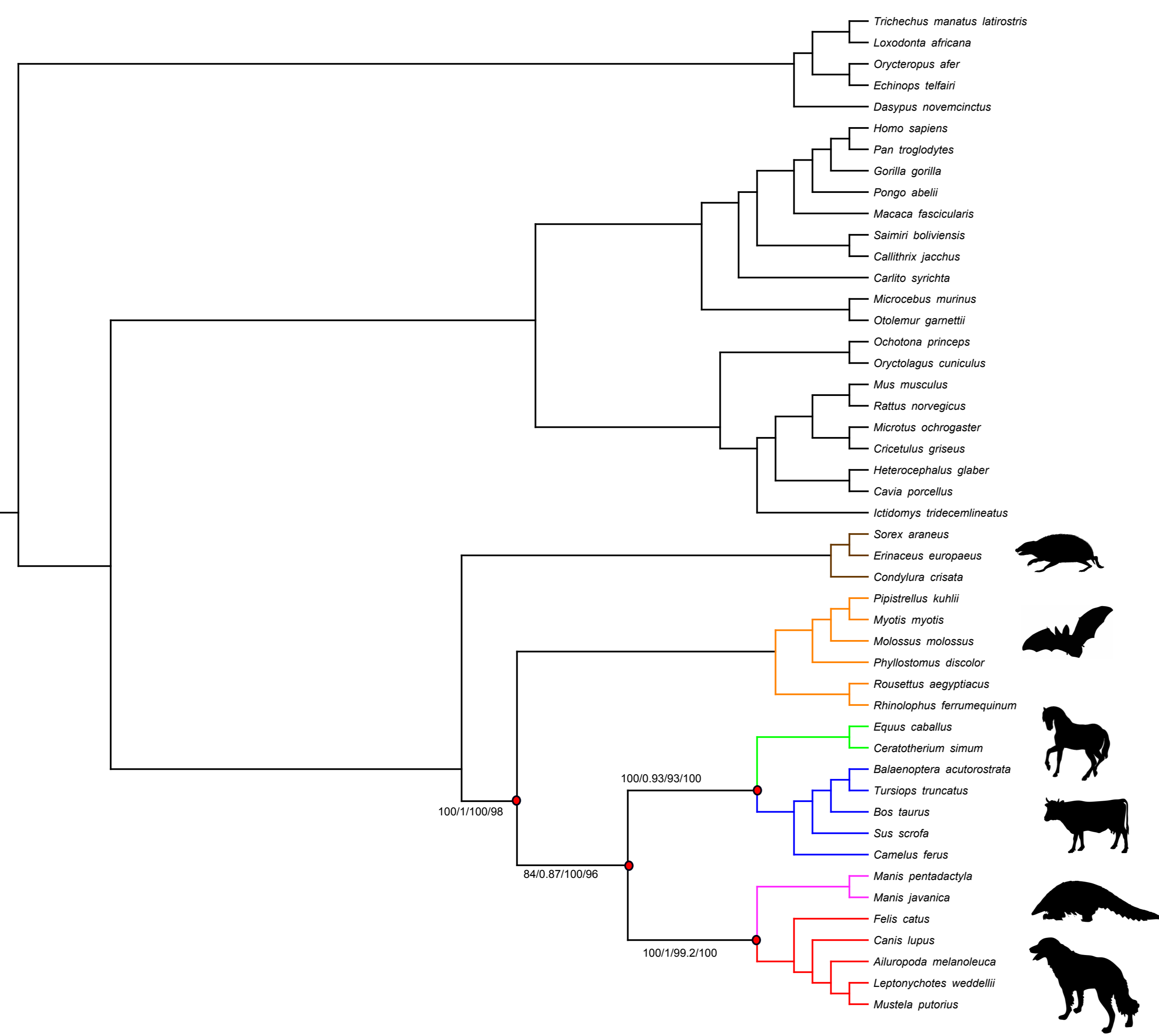
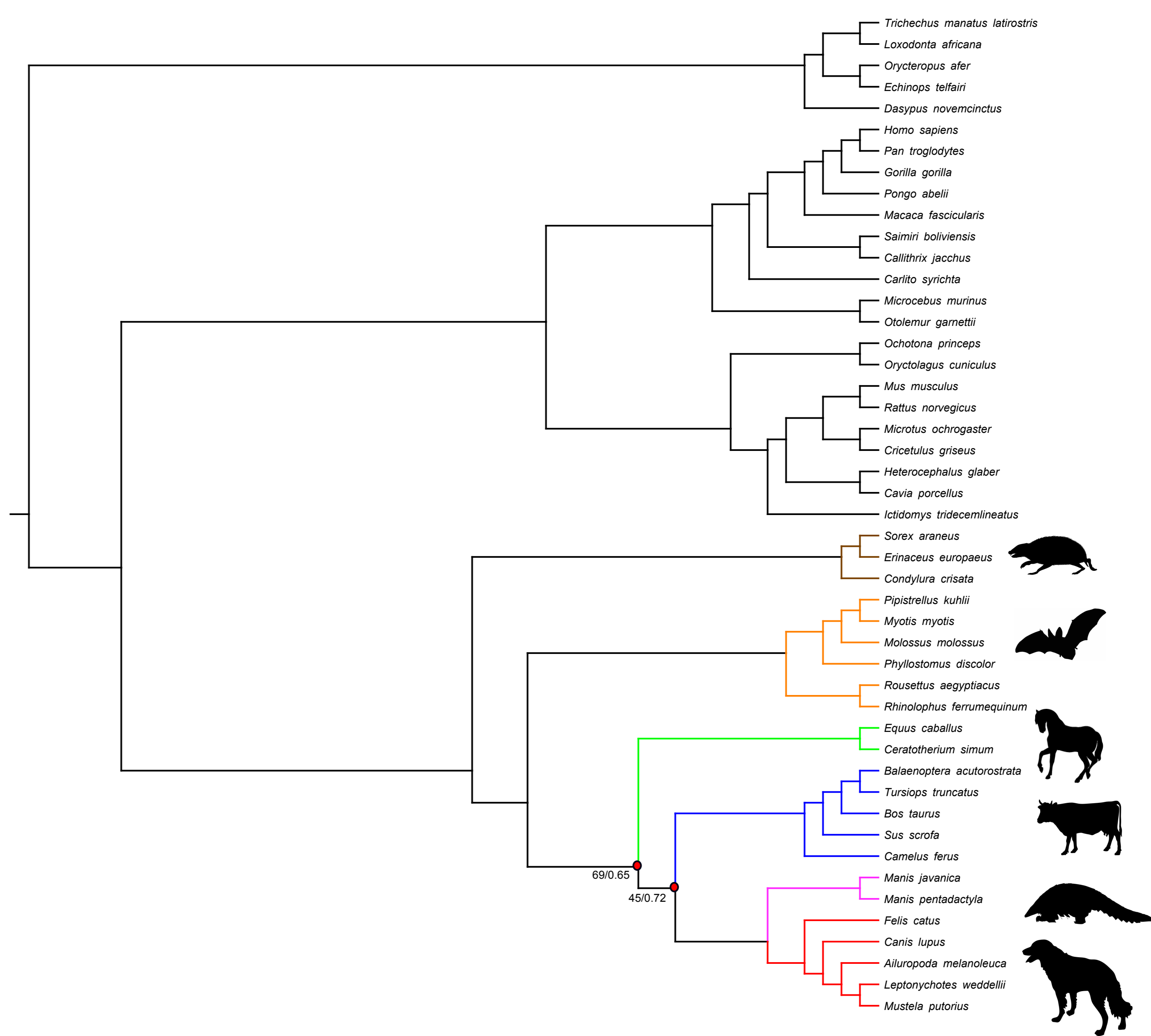


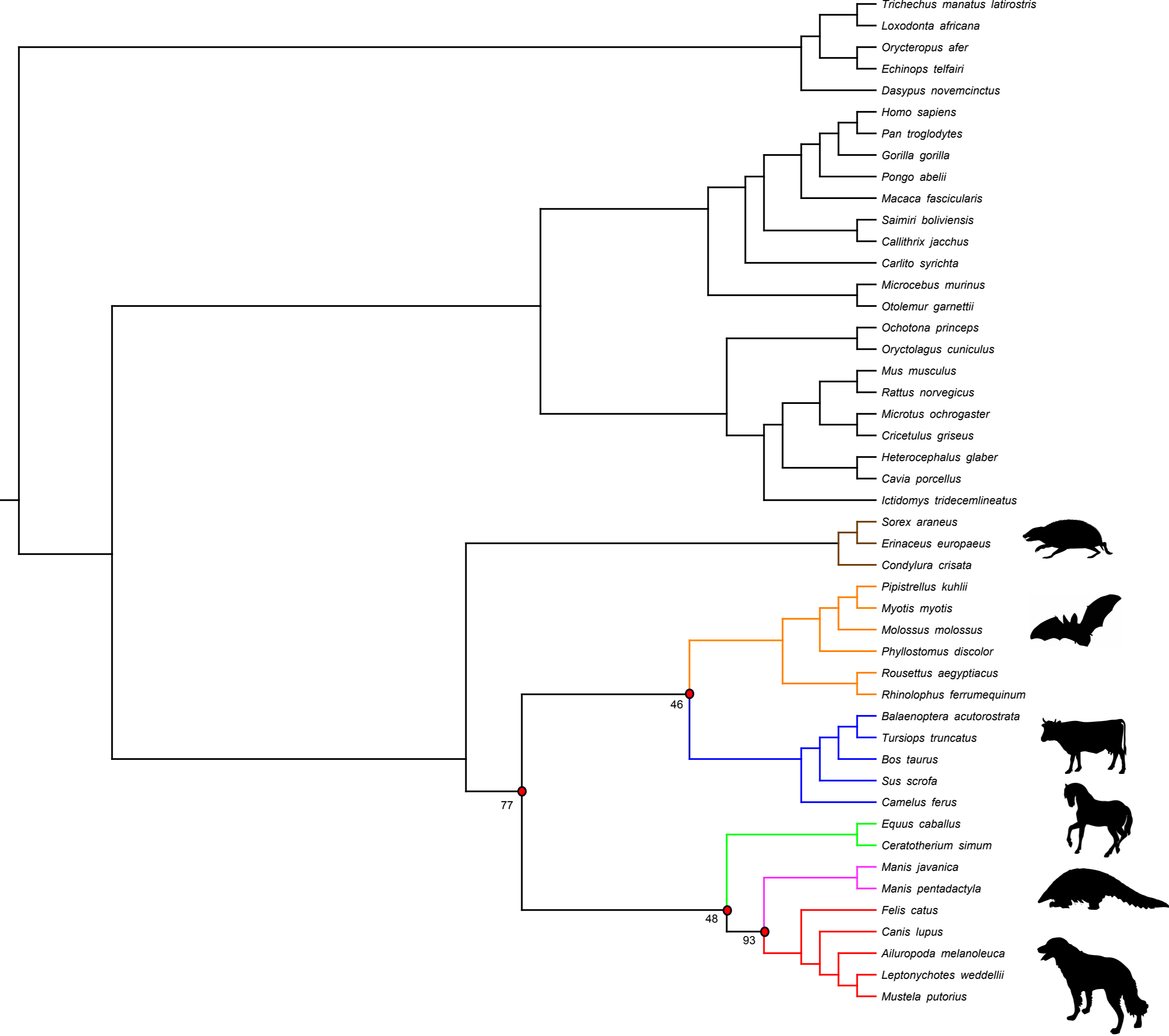
Topology 1



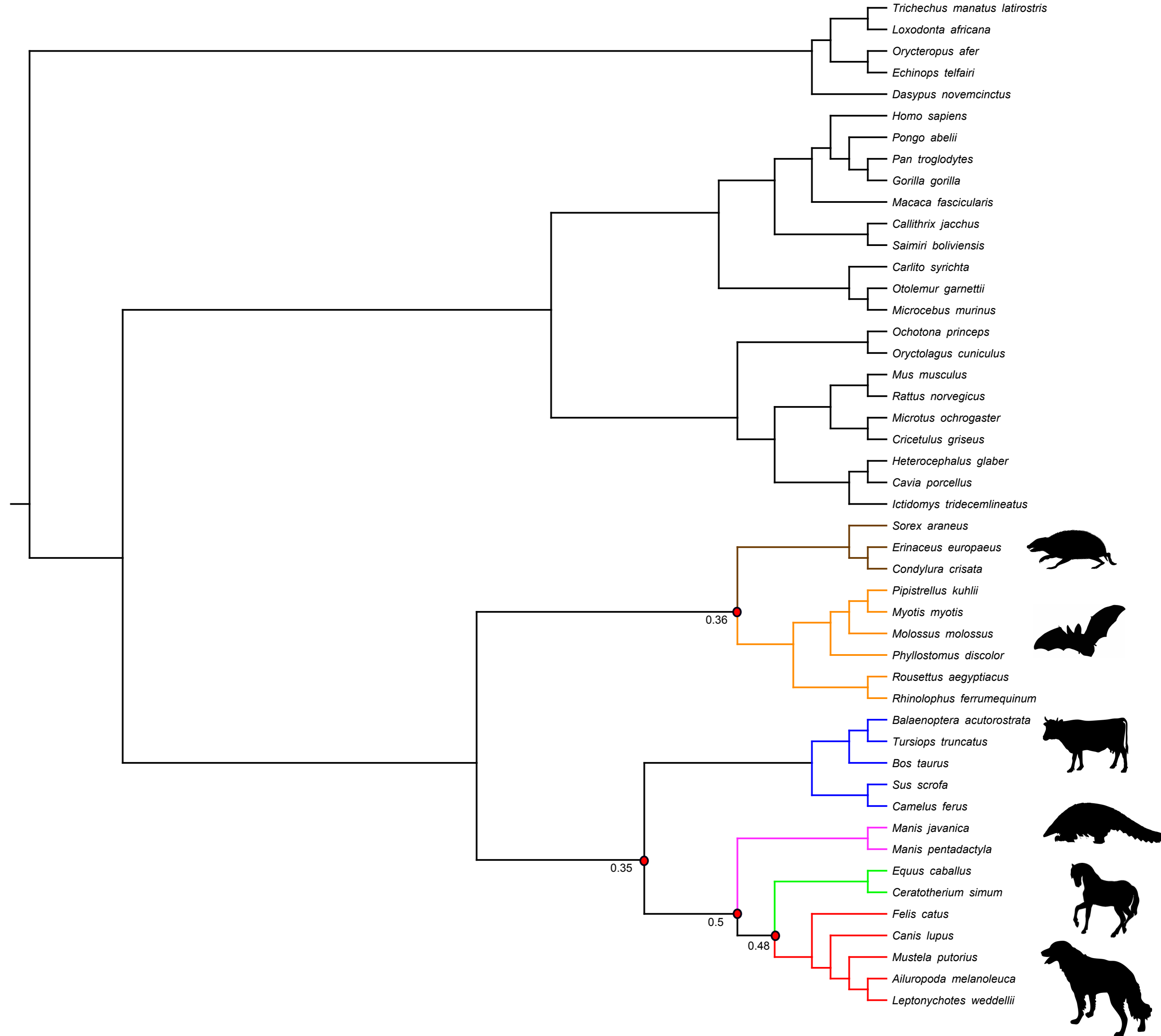
Topology 2



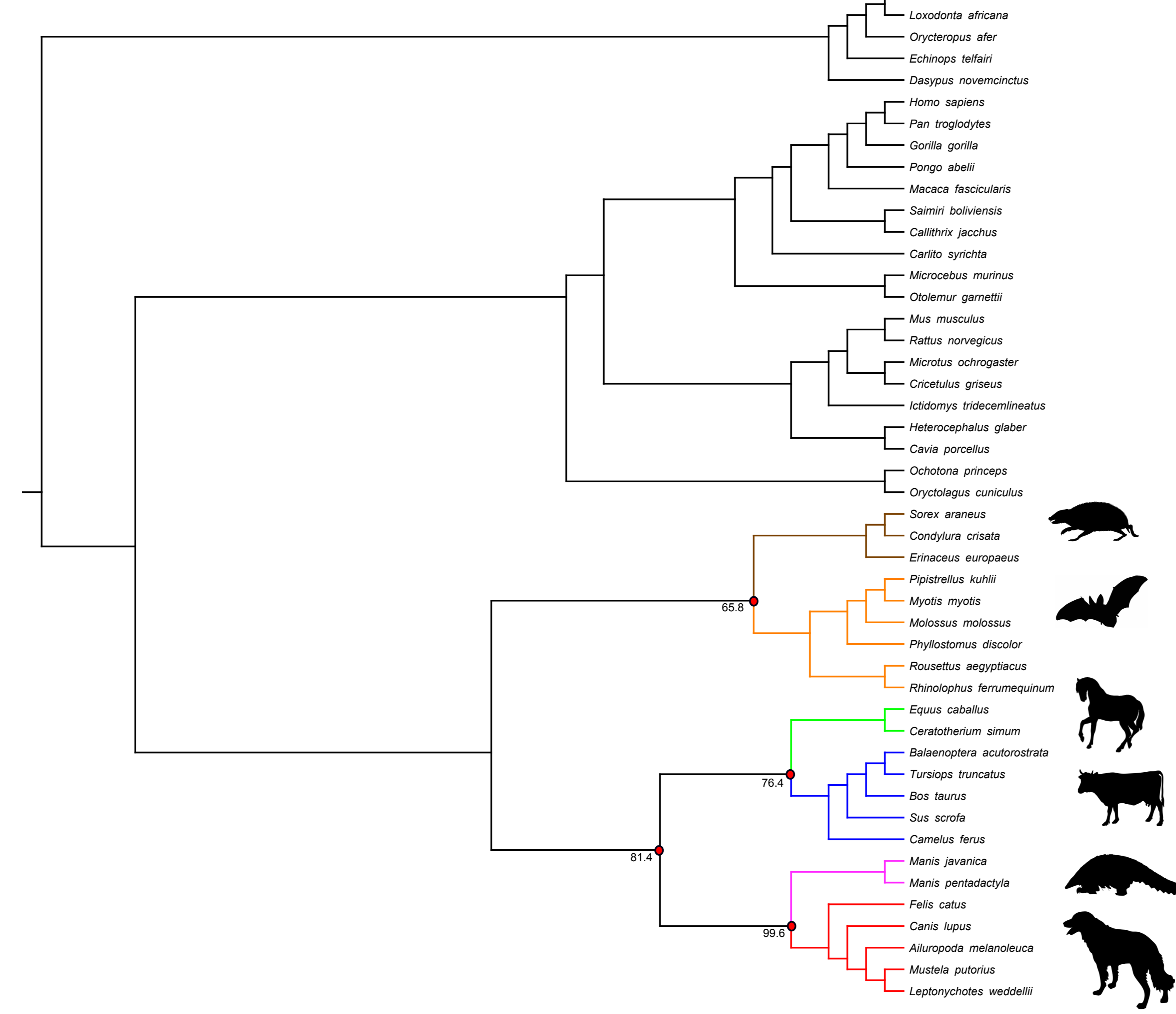
Topology 3



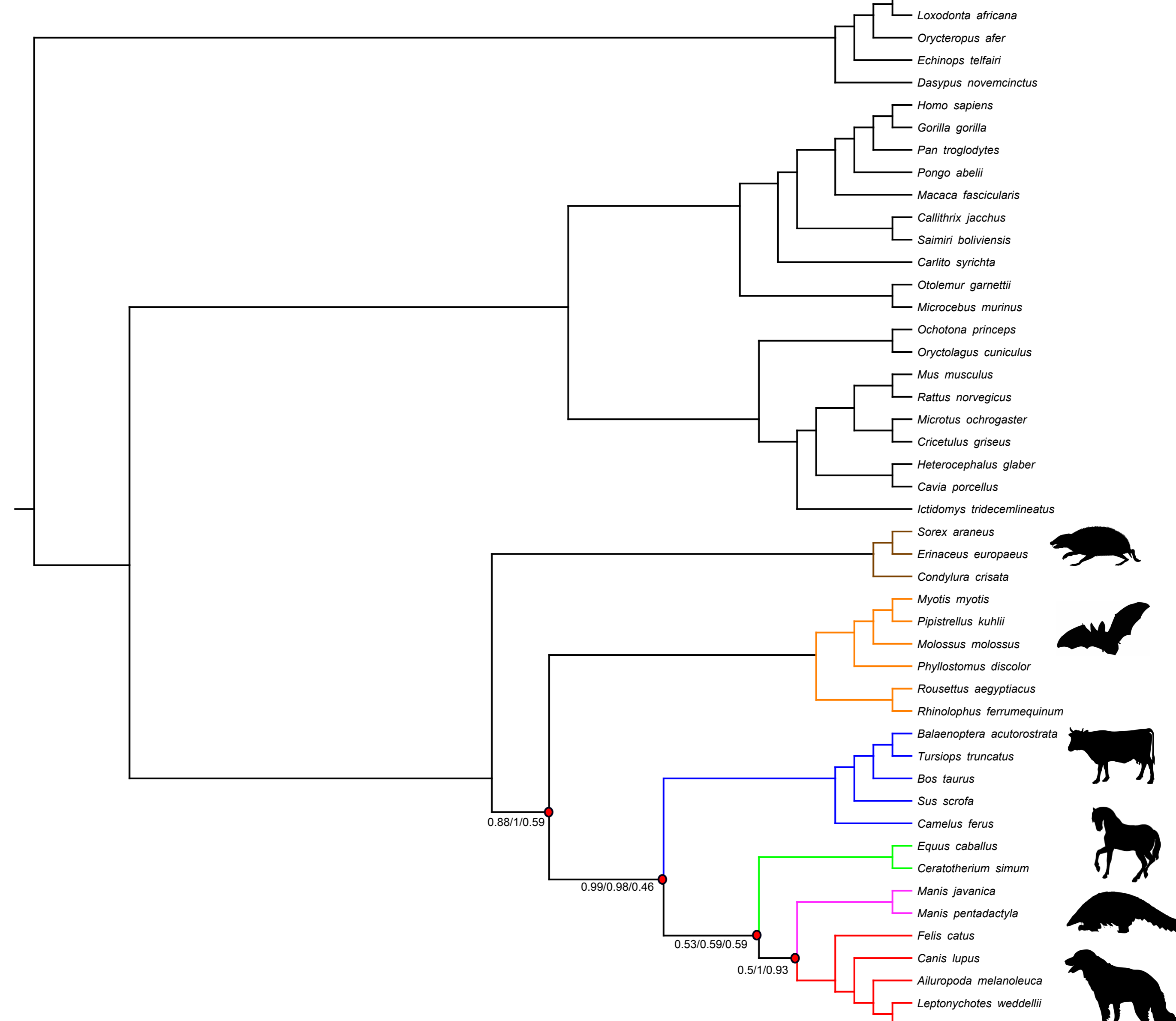
Topology 4



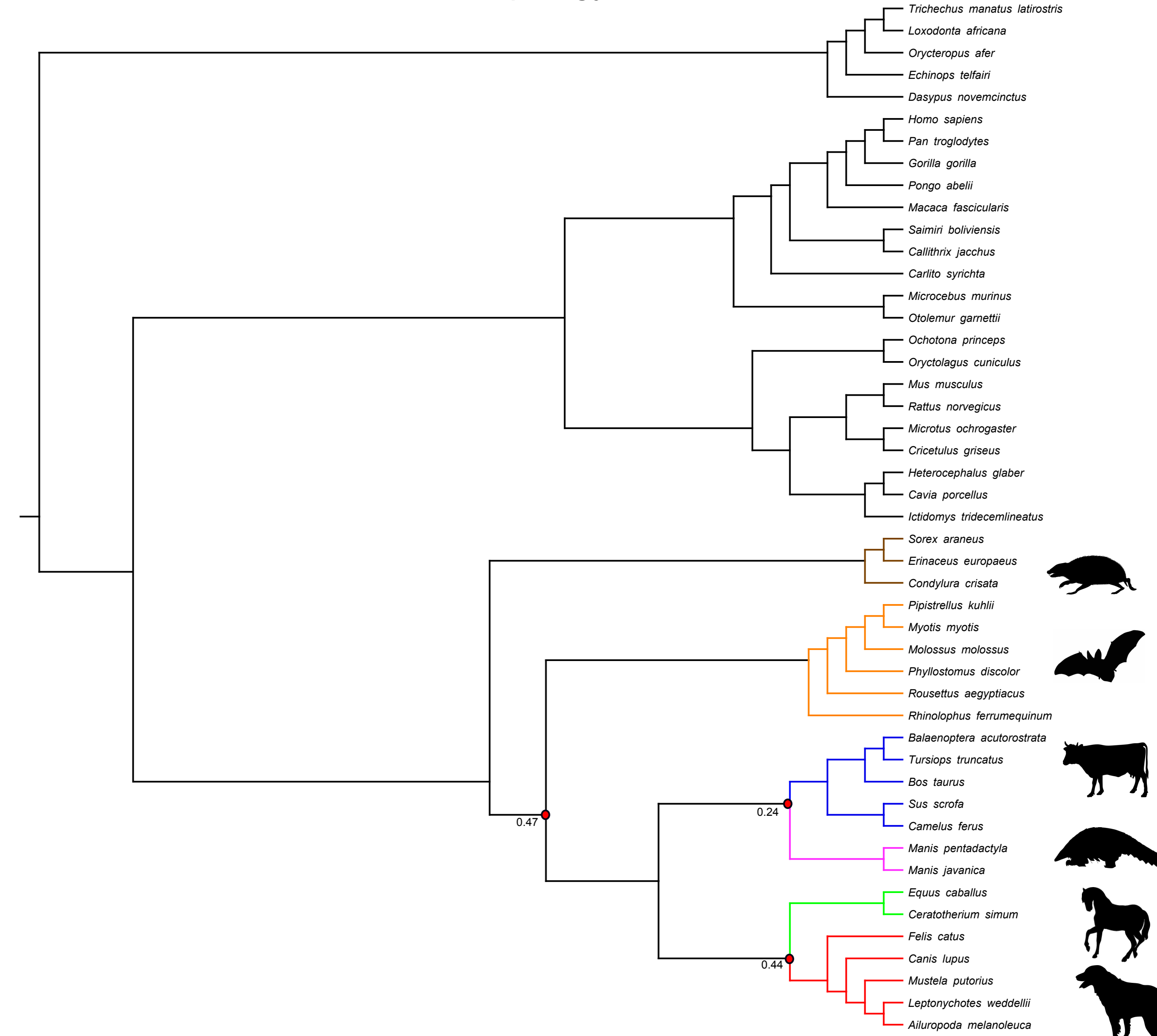
Topology 5



Topology 6



Topology 7



**Supplemental Figure S3.** Seven different laurasiatherian topologies recovered across 14 datasets using both maximum likelihood and coalescence-based methods. A total of seven distinct laurasiatherian topologies were recovered using both exon DNA and amino acid alignments. Both maximum likelihood and coalescence-based methods were applied. Support values for internal edges where at least one dataset had less than full support are displayed.