

CORRECTION OPEN



Correction: Genetic aetiologies for childhood speech disorder: novel pathways co-expressed during brain development

Antony Kaspi, Michael S. Hildebrand , Victoria E. Jackson , Ruth Braden, Olivia van Reyk, Tegan Howell, Simone Debono, Mariana Laurretta, Lottie Morison, Matthew J. Coleman, Richard Webster, David Coman, Himanshu Goel, Mathew Wallis, Gabriel Dabscheck, Lilian Downie, Emma K. Baker, Bronwyn Parry-Fielder, Kirrie Ballard, Eva Harrold, Shaun Ziegenfusz, Mark F. Bennett , Erandee Robertson, Longfei Wang , Amber Boys, Simon E. Fisher , David J. Amor , Ingrid E. Scheffer , Melanie Bahlo and Angela T. Morgan

© The Author(s) 2023

Molecular Psychiatry; <https://doi.org/10.1038/s41380-022-01879-y>

Correction to: *Molecular Psychiatry* <https://doi.org/10.1038/s41380-022-01764-8>, published online 18 September 2022

Wording was altered for the discussion.

Only two probands (11%) with genetic diagnoses (*SETD1B* (ID10), *ERF* (ID18)) had CAS without co-occurring neurodevelopmental disorder diagnoses. One was aged 10;8 years, had average IQ and was attending a school for children with specific speech and language impairment. The other child was only 4;7 years and had not yet had IQ testing because no concerns had been raised by his treating physician, family or preschool teacher regarding his general learning ability; however, it is possible that other neurodevelopmental diagnoses could still be made into the future. These findings expand the spectrum of phenotypes associated with these conditions. *SETD1B* has been previously associated with epilepsy, intellectual disability and language delay, and *ERF*-related craniosynostosis syndrome often includes speech and language delay, learning difficulties or behavioural problems; however variable expressivity and incomplete penetrance have previously been observed [40].

See attached files for table and figure changes.

Table 1

17	4;6	F	CAS, Dysarthria	<i>TRIP12</i>	Y	Y	N	N	N/A	N	N	N	N
18	4;7	M	CAS	<i>ERF</i>	N	N	N	N	CHIARI 1 Malformation Metopic craniosynostosis	N	N	N	N

Table 3a

17	F	2:230641603–230701402dup	<i>TRIP12</i> (NM_001348329)	617752	NA	NA	Exonic duplication	gnomADpLI = 1	0	De novo	PVS1, PM2, PPS Class 5 Pathogenic
18	M	19:42753717	<i>ERF</i> (ENST0000022329)	617180	c.547 C > T	p.R183*	Nonsense	gnomADpLI = 0.99 LoFtool = 0.02;CADD = 35	0	Inherited from affected Mother	PVS1, PM2, PPS Class 5 Pathogenic

Fig. 3

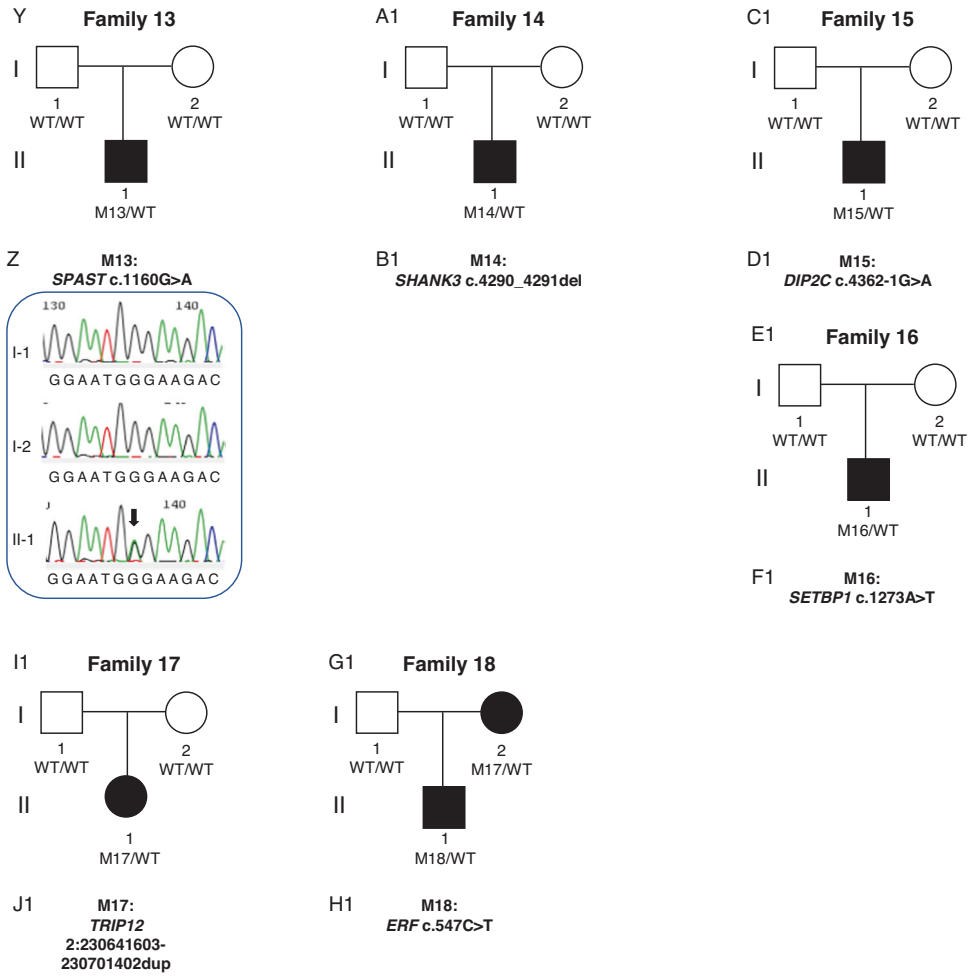
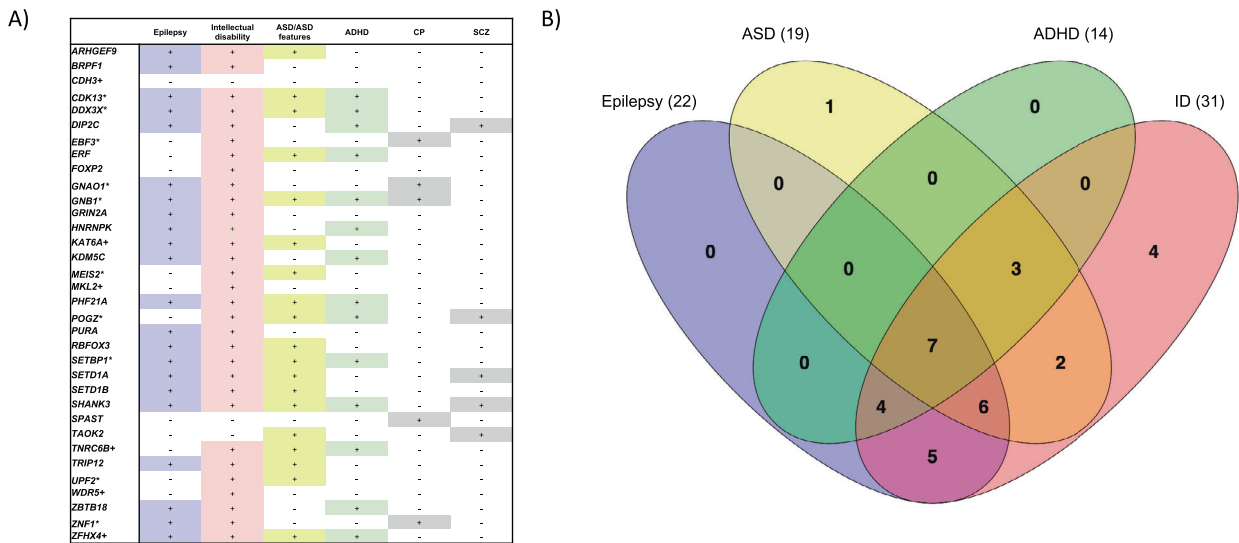


Fig. 4



The original article has been corrected.



Open Access This article is licensed under a Creative Commons Attribution 4.0 International License, which permits use, sharing, adaptation, distribution and reproduction in any medium or format, as long as you give appropriate credit to the original author(s) and the source, provide a link to the Creative Commons license, and indicate if changes were made. The images or other third party material in this article are included in the article's Creative Commons license, unless indicated otherwise in a credit line to the material. If material is not included in the

article's Creative Commons license and your intended use is not permitted by statutory regulation or exceeds the permitted use, you will need to obtain permission directly from the copyright holder. To view a copy of this license, visit <http://creativecommons.org/licenses/by/4.0/>.

© The Author(s) 2023